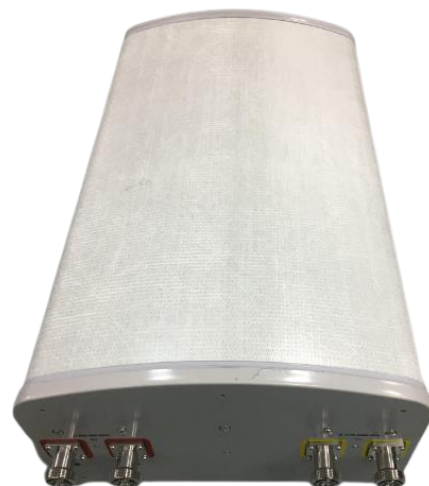




FEATURES / BENEFITS

- 2 ports / 1 cross pol system in low band (698-960MHz)
- 2 ports / 1 cross pol system in high band (1710-2690MHz)
- Fixed tilt



Technical features

ELECTRICAL SPECIFICATIONS

| Electrical Specification Header | | LOW BAND ARRAY (698-960 MHz) [R1] | | |
|--|------|-----------------------------------|--------------|--------------|
| Frequency Band | MHz | 698-806 | 790-894 | 880-960 |
| Gain Typical | dBi | 12.1 | 12.1 | 12.1 |
| Gain Over all Tilts | dBi | 11.1 +/- 1 | 12 +/- 0.1 | 12 +/- 0.1 |
| Azimuth Beamwidth 3dB | Deg | 68.5 +/- 1.5 | 66.3 +/- 1.5 | 65.7 +/- 1.2 |
| Elevation Beamwidth 3dB | Deg | 39.6 +/- 2.5 | 35.4 +/- 1.5 | 35.4 +/- 0.7 |
| Cross Polar Discrimination at Boresight | dB | 22.6 | 23.4 | 25.8 |
| Cross Polar Discrimination over Sector | dB | 11 | 10.9 | 9.7 |
| F/B at +/-30deg Total Power | dB | 22.2 | 23 | 23 |
| First Upper Side Lobe Suppression | dB | 11 | 12 | 10.9 |
| Electrical Downtilt | Deg | 5 | | |
| Cross Polar Isolation | dB | 24 | | |
| Interband Isolation | dB | 24 | | |
| VSWR | - | 1.5 | | |
| Passive Intermodulation (3rd Order, 2 x 43dBm) | dBc | -153 | | |
| Maximum Effective Power per Port | Watt | 500 | | |

**ELECTRICAL SPECIFICATIONS**

| Electrical Specification Header | | HIGH BAND ARRAY (1710-2690 MHZ) [Y1] | | | | |
|--|------|--------------------------------------|--------------|--------------|--------------|--------------|
| Frequency Band | Mhz | 1710-1880 | 1850-1990 | 1920-2170 | 2300-2400 | 2490-2690 |
| Gain Typical | dBi | 14.1 | 13.9 | 13.8 | 14.1 | 15 |
| Gain Over all Tilts | dBi | 13.1 +/- 1 | 13.4 +/- 0.5 | 13.3 +/- 0.5 | 13.6 +/- 0.5 | 14.5 +/- 0.5 |
| Azimuth Beamwidth 3dB | Deg | 66.8 +/- 6.5 | 66.4 +/- 4.2 | 66.6 +/- 4 | 70.2 +/- 2.3 | 66.2 +/- 6.8 |
| Elevation Beamwidth 3 dB | Deg | 19.2 +/- 1 | 17.8 +/- 0.6 | 16.9 +/- 1 | 14.6 +/- 0.8 | 13.5 +/- 1.6 |
| Cross Polar Discrimination at Boresight | dB | 20.8 | 21.9 | 21.7 | 17.6 | 17.1 |
| Cross Polar Discrimination over Sector | dB | 8 | 9.6 | 10 | 11.5 | 2 |
| F/B at +/-30deg Total Power | dB | 20.9 | 23.3 | 21.4 | 18.5 | 18 |
| First Upper Side Lobe Suppression | dB | 14.6 | 16.1 | 14 | 12.3 | 10.9 |
| Electrical Downtilt | Deg | 5 | | | | |
| Cross Polar Isolation | dB | 24 | | | | |
| Interband Isolation | dB | 24 | | | | |
| VSWR | - | 1.5 | | | | |
| Passive Intermodulation (3rd Order, 2 x 43dBm) | dBc | -153 | | | | |
| Maximum Effective Power per Port | Watt | 250 | | | | |

ELECTRICAL SPECIFICATIONS

| | | |
|--------------|-----|------|
| Impedance | Ohm | 50 |
| Polarization | Deg | ±45° |

MECHANICAL SPECIFICATIONS

| | | |
|---------------------------------|---------|-------------------------------------|
| Dimensions - H x W x D | mm (in) | 620 x 350 x 200 (24.4 x 13.8 x 7.9) |
| Weight (Antenna Only) | kg (lb) | 8 (17.6) |
| Weight (Mounting Hardware only) | kg (lb) | 4.5 (9.9) |
| Packing size- HxWxD | mm (in) | 890 x 425 x 275 (35 x 16.7 x 10.8) |
| Shipping Weight | kg (lb) | 15.7 (34.6) |
| Connector type | | 4 x 4.3-10 female/bottom |
| Radome Material / Color | | Fiberglass / Light Gray |

TESTING AND ENVIRONMENTAL

| | | |
|------------------------------|---------|-------------------------|
| Temperature Range | °C (°F) | -40 to 60 (-40 to 140) |
| Lightning protection | | DC Ground |
| Survival/Rated Wind Velocity | km/h | 200 (150) |
| Wind Load @Rated Wind Front | N | 253 |
| Wind Load @Rated Wind Side | N | 85 |
| Wind Load @Rated Wind Rear | N | 155 |

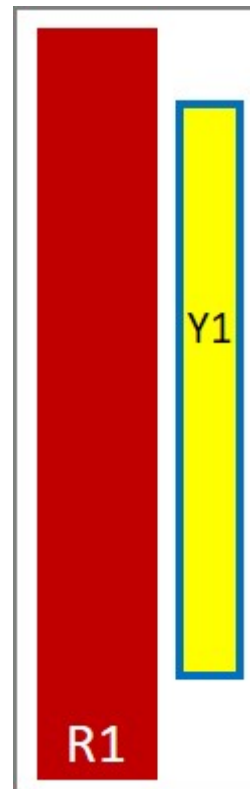
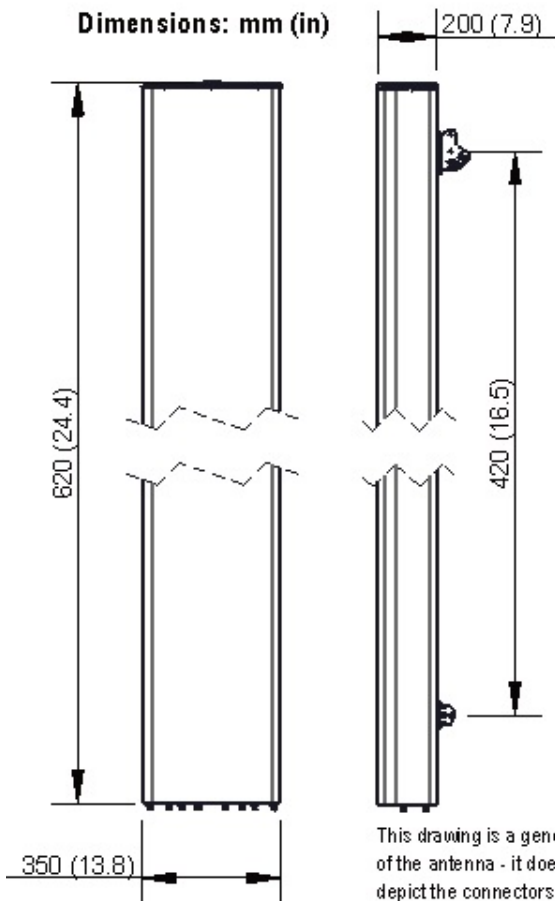
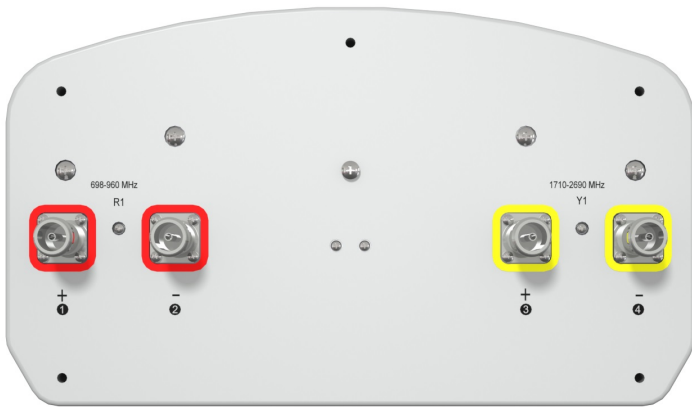
ORDERING INFORMATION

| Order No. | Configuration | Mounting Hardware | Mounting pipe Diameter | Shipping Weight |
|-----------------|---------------|-------------------|------------------------|-----------------|
| APXBL06B 43-CT5 | Fixed tilt | APM50-B1 | 50-110 mm | 15.7 kg |



APXBL06B_43-CT5

Dual band X-pol Antenna, 698-960/1710-2690MHz, 65deg, 12.2/15.3dBi, 0.6m, 5deg, Fixed



External Document Links
[APM50_Series_Installation_Instructions](#)

Notes

- All electrical parameters are compliant with BASTA NGMN 11.1 requirements.
- For additional mounting information please click "External Document Links".
- **Radiating patterns:** [Request pattern files](#)



PRODUCT DATASHEET

APXBL06B_43-CT5

Dual band X-pol Antenna, 698-960/1710-2690MHz, 65deg, 12.2/15.3dBi, 0.6m, 5deg, Fixed

