



**APXV3B26B\_43-C-I20**

Dual Slant Polarized Single Band 2 Port Antenna, 698-960MHz, 33deg, 20.9dBi, 2.6m, 2-12deg, Integrated RET

**FEATURES / BENEFITS**

- 2 ports / 1 cross pol system in low band (698-960MHz), 33deg.
- Integrated and field replaceable SRET
- ACU HW Version -2.02
- Compliant with AISG V2.0 and 3GPP



**Technical features**

**ELECTRICAL SPECIFICATIONS**

Electrical Specification Header		Low Band Array (698-960 MHz) [R1]		
Frequency Band	MHz	698-806	790-894	880-960
Gain Typical	dBi	19.2	19.7	20.9
Gain Over all Tilts	dBi	18.7 +/- 0.5	19.2 +/- 0.5	19.9 +/- 1
Azimuth Beamwidth 3dB	Deg	36.9 +/- 3	32.8 +/- 2	31.6 +/- 0.5
Elevation Beamwidth 3dB	Deg	8.7 +/- 0.5	7.9 +/- 0.5	7.1 +/- 0.5
Cross Polar Discrimination at Boresight	dB	26	23.5	23
Cross Polar Discrimination over Sector	dB	6	8	9
F/B at +/-30deg Total Power	dB	26	26	26
First Upper Side Lobe Suppression	dB	20	18	18
Electrical Downtilt	Deg	2 to 12		
Cross Polar Isolation	dB	28		
VSWR	-	1.5		
Passive Intermodulation (3rd Order, 2 x 43dBm)	dBc	-153		
Maximum Effective Power per Port	Watt	350		

**ELECTRICAL SPECIFICATIONS**

Impedance	Ohm	50
Polarization	Deg	±45°



**APXV3B26B\_43-C-I20**

Dual Slant Polarized Single Band 2 Port Antenna, 698-960MHz, 33deg, 20.9dBi, 2.6m, 2-12deg, Integrated RET

**MECHANICAL SPECIFICATIONS**

Dimensions - H x W x D	mm (in)	2530 x 565 x 145 (99.6 x 22.2 x 5.7)
Weight (Antenna Only)	kg (lb)	31.2 (68.8)
Weight (Mounting Hardware only)	kg (lb)	4.5 (9.9)
Packing size- HxWxD	mm (in)	2800 x 640 x 230 (110.2 x 25.2 x 9.1)
Shipping Weight	kg (lb)	43.5 (95.9)
Connector type		2x 4.3-10 female/bottom + 2 AISG connectors (1 male, 1 female)
Radome Material / Color		Fiberglass / Light Grey RAL7035

**TESTING AND ENVIRONMENTAL**

Temperature Range	°C (°F)	-40 to 60 (-40 to 140 )
Lightning protection		Direct Ground
Survival/Rated Wind Velocity	km/h	200 (150 )
Wind Load @Rated Wind Front	N	1649
Wind Load @Rated Wind Side	N	622
Wind Load @Rated Wind Rear	N	1554

**ORDERING INFORMATION**

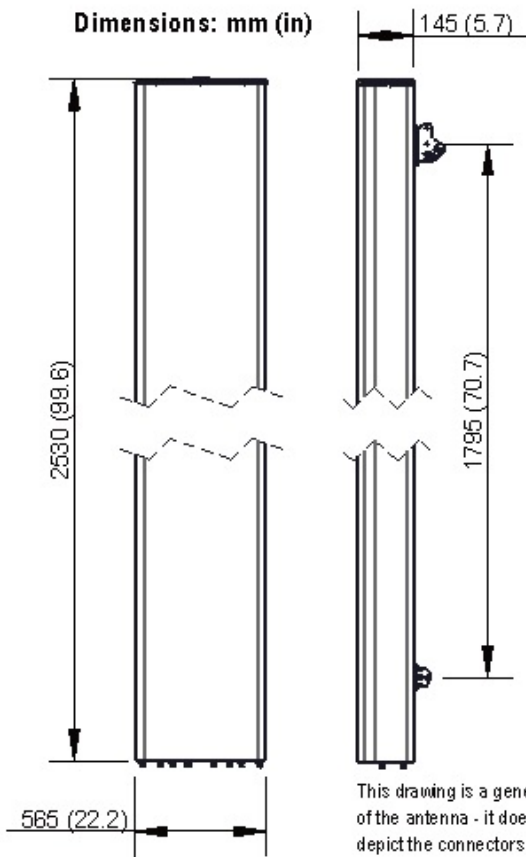
Order No.	Configuration	Mounting Hardware	Mounting Pipe Diameter	Shipping Weight
APXV3B26B_43-C-I20	Internal RET (ACU-I20-B1)	APM50-B2	60-110mm	43.5 kg





**APXV3B26B\_43-C-I20**

Dual Slant Polarized Single Band 2 Port Antenna, 698-960MHz, 33deg, 20.9dBi, 2.6m, 2-12deg, Integrated RET



**External Document Links**  
[APM50\\_Series\\_Installation\\_Instructions](#)

**Notes**

- All electrical parameters are compliant with BASTA NGMN 11.1 requirements.
- For additional mounting information please click "External Document Links".
- **Radiating patterns:** [Request pattern files](#)