



APXVA13X_43-C-A20

Dual Slant Polarized Single Band (2 Port) Antenna, 617-894MHz, 65 deg, 14.1 dBi, 1.3m(4.5ft), VET, RET, 5-18° Tilt Range

FEATURES / BENEFITS

This antenna provides a two port platform for advanced use in 600MHz, 700MHz, and 800 MHz deployment scenarios in a high quality package design built to withstand harsh environments.

- Narrow 12" radome for difficult zoning sites.
- Superior elevation performance across the entire electrical down tilt range.
- High Gain performance for optimum site coverage, reduced power and signal integrity.
- ACU-A20-SR Field Replaceable (Integrated) AISG RET motor



Technical features

ELECTRICAL SPECIFICATIONS

Electrical Specification Header		LOW BAND ARRAY (617-894 MHz) [R]		
Frequency Range	MHz	617-698	698-806	806-894
Gain Typical	dBi	13.0	13.7	14.1
Gain	dBi	12.6+/-0.4	13.3+/-0.4	13.8+/-0.3
Horizontal Beamwidth	deg	71+/-1	68+/-2	63+/-2
Vertical Beamwidth	deg	20.6+/-1.3	17.9+/-1.6	15.3+/-0.9
Electrical Downtilt Range	deg	5 to 18		
Upper Side Lobe Suppression Peak to +20	dB	22	22	17
Front to Back Ratio +/-30 Copolar	dB	23	24	24
Cross Polar Isolation	dB	25		
3rd Order IMP 2 x 43dBm	dBc	-153		
Cross Polarization (XPD) @ Boresight	dB	21	23	25
Cross Polarization (XPD) @ +/-60	dB	10	12	8
VSWR	-	1.5:1		
Maximum Power Input	Watts	300		

ELECTRICAL SPECIFICATIONS

Impedance	Ohm	50
Polarization	Deg	±45°



APXVA13X_43-C-A20

Dual Slant Polarized Single Band (2 Port) Antenna, 617-894MHz, 65 deg, 14.1 dBi, 1.3m(4.5ft), VET, RET, 5-18° Tilt Range

MECHANICAL SPECIFICATIONS

Dimensions - H x W x D	mm (in)	1380 x 303 x 202 (54.3 x 11.9 x 8)
Weight (Antenna Only)	kg (lb)	12.1 (26.7)
Weight (Mounting Hardware only)	kg (lb)	3.9 (8.6)
Packing size- HxWxD	mm (in)	1500 x 360 x 360 (59 x 14.2 x 14.2)
Shipping Weight	kg (lb)	20 (44.1)
Connector type		2 x 4.3-10 Long Neck Female/Bottom + 2 AISG connectors (1 male, 1 female)
Adjustment mechanism		ACU-A20-SR Integrated RET solution AISG compliant (Field Replaceable) + Manual Override + External Tilt Indicator
Radome Material / Color		ASA / Light Grey RAL7035

TESTING AND ENVIRONMENTAL

Temperature Range	°C (°F)	-40 to 60 (-40 to 140)
Lightning protection		Direct Ground
Survival/Rated Wind Velocity	km/h	240 (160)
Wind Load @Rated Wind Front	N	553
Wind Load @Rated Wind Side	N	484
Wind Load @Rated Wind Rear	N	730

ORDERING INFORMATION

Order No.	Configuration	Mounting Hardware	Mounting pipe Diameter	Shipping Weight
APXVA13X_43-C-A20	ACU-A20-SR Semi-Internal Field Replaceable RET	APM40-2	60-120 mm	20 kg

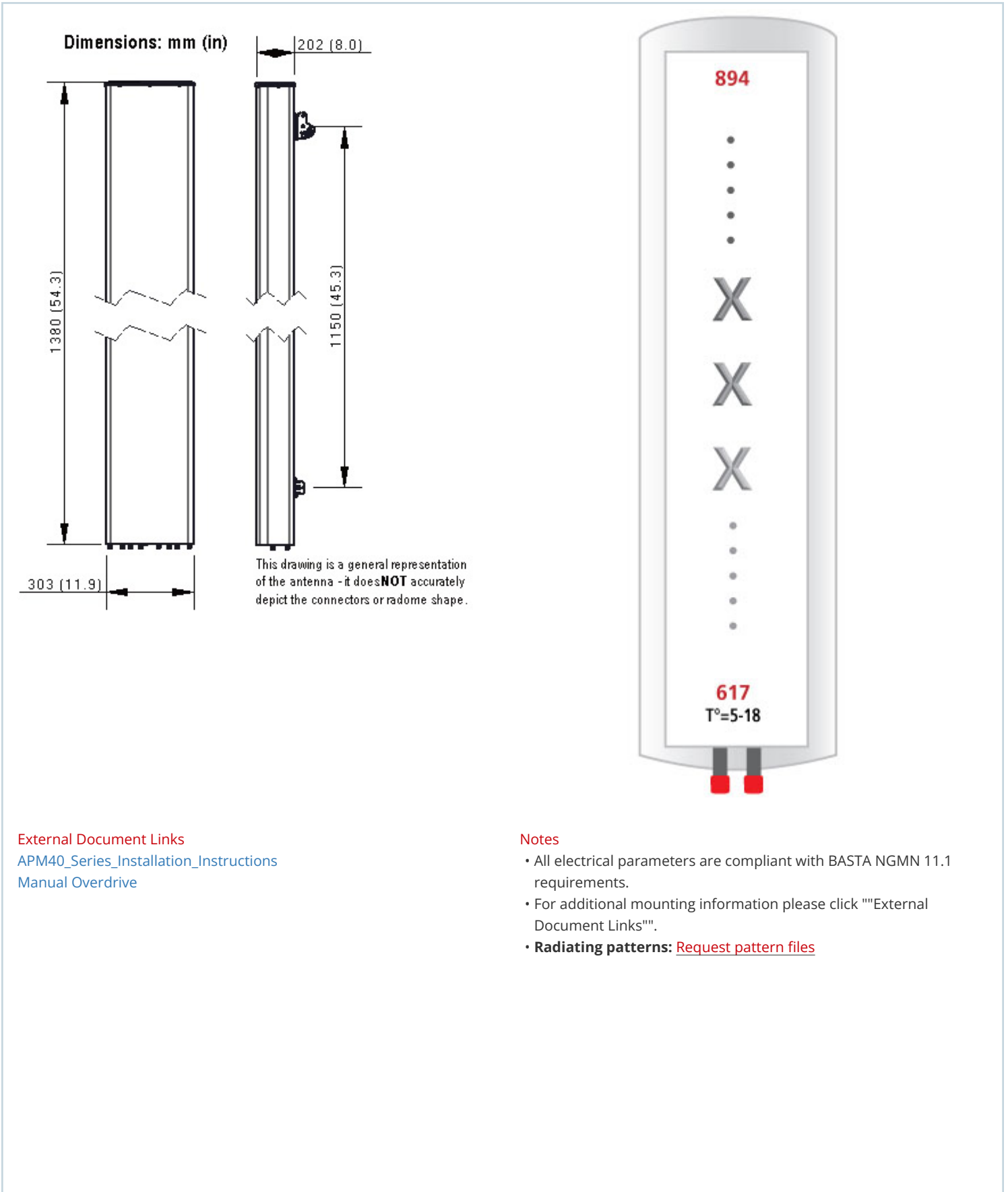
Port	RET	Frequency	Description
1	R1	617-894	+45
2	R1	617-894	-45





APXVA13X_43-C-A20

Dual Slant Polarized Single Band (2 Port) Antenna, 617-894MHz, 65 deg, 14.1 dBi, 1.3m(4.5ft), VET, RET, 5-18° Tilt Range



External Document Links
[APM40_Series_Installation_Instructions](#)
[Manual Overdrive](#)

- Notes**
- All electrical parameters are compliant with BASTA NGMN 11.1 requirements.
 - For additional mounting information please click ""External Document Links"".
 - **Radiating patterns:** [Request pattern files](#)