



APXVAA4L18_43-U-NA20

12-Ports, X-Pol, Panel Antenna, 1.8m, 2x 617-894/4x 1695-2690 MHz 65deg, Integrated RET

FEATURES / BENEFITS

- MIMO 4x4 in low-band and mid-band x2 (L/CL & CR/R)
- Integrated and fieldreplaceable RET
- ACU model number: x3 ACU-A20-SR, ACU HW 05
- Compliant with AISG V2.0 and 3GPP
- AISG jumper cable included
- Mechanical down tilt kit included



Technical features

ELECTRICAL SPECIFICATIONS

Electrical Specification Header		Low Band Arrays (617-894 MHz) Ports 1-4		
Frequency Band	MHz	617-698	698-806	806-894
Gain	dBi	14.3	14.4	14.6
Azimuth Beamwidth 3dB	Deg	70 +/- 3	68 +/- 5	65 +/-5
Elevation Beamwidth 3dB	Deg	15 +/- 1	13 +/- 1.3	11 +/- .7
Cross-Pol at Boresight	dB	25	22	21
F/B at 180 Copolar	dB	25	29	28
Electrical Downtilt	Deg	2-12	2-12	2-12
First Upper Side Lobe	dB	17	18	20
VSWR	-	1.5:1	1.5:1	1.5:1
Return Loss	dB	-14	-14	-14
Cross Polar Isolation	dB	25	25	25
3rd Order PIM 2 x 43dBm	dBc	-153	-153	-153
Maximum CW Power per Port	Watt	400	400	400
Gain Over All Tilts	dBi	13.8 +/-0.5	13.8 +/-0.6	14.0 +/-0.6
Cross-Pol over Sector	dB	9	5	4
F/B at +/-30 Total Power	dB	18	18	20
Upper Side Lobe Peak to +20	dB	20	19	20



APXVAA4L18_43-U-NA20

12-Ports, X-Pol, Panel Antenna, 1.8m, 2x 617-894/4x 1695-2690 MHz 65deg, Integrated RET

ELECTRICAL SPECIFICATIONS

Electrical Specification Header		High Band Arrays (1695-2690 MHz) Ports 5-12				
Frequency Band	MHz	1695-1880	1850-1990	1920-2200	2200-2500	2500-2690
Gain	dBi	17.5	18.0	18.9	18.7	18.5
Azimuth Beamwidth 3dB	Deg	67 +/- 5	65 +/- 7	62 +/- 9	58 +/- 7	57 +/- 7
Elevation Beamwidth 3dB	Deg	5.5 +/- .3	5.2 +/- .3	4.8 +/- .4	4.4 +/- .2	4.0 +/- .3
Cross-Pol at Boresight	dB	23	22	18	19	21
F/B at 180 Copolar	dB	31	30	30	30	29
Electrical Downtilt	Deg	2-12	2-12	2-12	2-12	2-12
First Upper Side Lobe	dB	15	17	17	17	17
VSWR	-	1.5:1	1.5:1	1.5:1	1.5:1	1.5:1
Return Loss	dB	-14	-14	-14	-14	-14
Cross Polar Isolation	dB	25	25	25	25	25
3rd Order PIM 2 x 43dBm	dBc	-153	-153	-153	-153	-153
Maximum CW Power per Port	Watt	250	250	250	250	250
Gain Over All Tilts	dBi	16.4+/-0.8	17.3+/-0.7	18.1+/-0.8	17.2+/-1.1	16.8+/-0.9
Cross-Pol over Sector	dB	6	5	4	1	2
F/B at +/-30 total Power	dB	26	29	28	24	23
Upper Side Lobe Peak to +20	dB	14	16	15	15	11

ELECTRICAL SPECIFICATIONS

Impedance	Ohm	50
Polarization	Deg	+/- 45

MECHANICAL SPECIFICATIONS

Dimensions - H x W x D	mm (in)	1829 x 609 x 215 (72 x 24 x 8.5)
Weight (Antenna Only)	kg (lb)	48 (106)
Weight (Mounting Hardware only)	kg (lb)	11.5 (25.3)
Packing size- HxWxD	mm (in)	1980 x 735 x 375 (78 x 28.9 x 14.8)
Shipping Weight	kg (lb)	69 (152)
Connector type		12 x 4.3-10 female at bottom + 6 AISG connectors (3 male, 3 female)
Radome Material / Color		Fiber Glass / Light Grey RAL7035

TESTING AND ENVIRONMENTAL

Temperature Range	°C (°F)	-40 to 60 (-40 to 140)
Lightning protection		DC Grounded
Survival/Rated Wind Velocity	km/h	240 (150)
Wind Load @Rated Wind Front	N	1072
Wind Load @Rated Wind Side	N	326
Wind Load @Rated Wind Rear	N	1160

ORDERING INFORMATION

Order No.	Configuration	Mounting Hardware	Mounting pipe Diameter	Shipping Weight
APXVAA4L18_43-U-NA20	ACU-A20-SR Field Replace RET included (3)	APM40-5E Beam tilt kit (included)	60-120mm	69 Kg

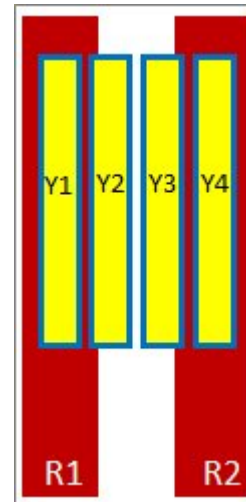
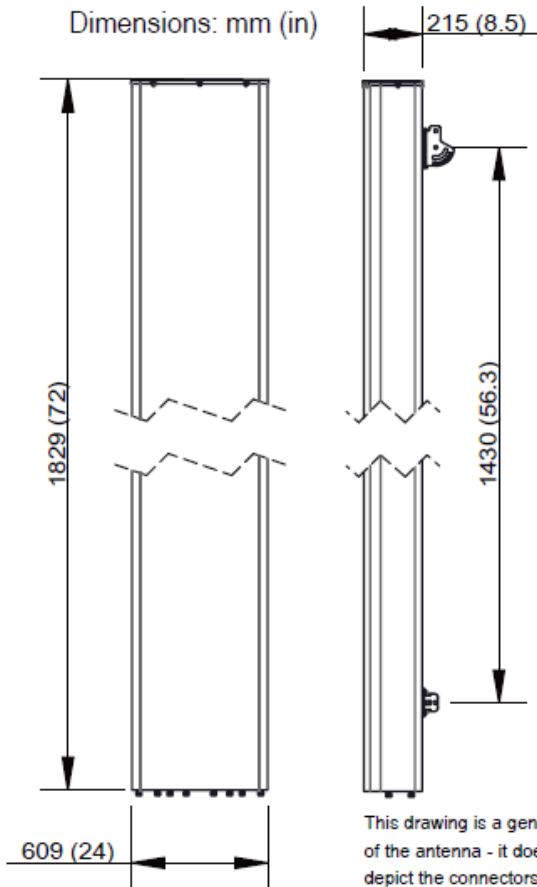
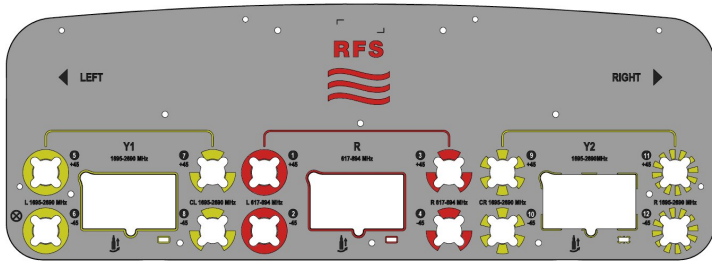


APXVAA4L18_43-U-NA20

12-Ports, X-Pol, Panel Antenna, 1.8m, 2x 617-894/4x 1695-2690 MHz 65deg, Integrated RET

Port	Array	Frequency	RET	AISG RET UID
1	R1	617-894	R1	RFxxxxxxxxxx-2R1
2		617-894		
3	R2	617-894		
4		617-894		
5	Y1	1695-2690	Y1	RFxxxxxxxxxx-2Y1
6		1695-2690		
7	Y2	1695-2690		
8		1695-2690		
9	Y3	1695-2690	Y2	RFxxxxxxxxxx-2Y2
10		1695-2690		
11	Y4	1695-2690		
12		1695-2690		

RET Information		
Frequency	617-894	1695-2690
Model	ACU-A20-SR	ACU-A20-SR
Location	Semi-internal	Semi-Internal
Field Replaceable	Yes	Yes
Quantity	1	2
RET ID	R1	Y1 & Y2



External Document Links

- [APM40_Series_Installation_Instructions](#)
- [CAxxx-7 Series](#)



[Manual_Overdrive_Instructions](#)

Notes

- All electrical parameters are compliant with BASTA NGMN 11.1 requirements.
- A one-meter AISG cable CA010-7 comes in the box, and for additional cable information please click ["External Document Links"](#).
- For additional mounting information please click ["External Document Links"](#).
- **Radiating patterns:** [Request pattern files](#)