



APXVAALL18_43-U-NA20

8-Ports, X-Pol, Panel Antenna, 1.8m, 2x 617-894/2x 1695-2690 MHz 65deg, Integrated RET

FEATURES / BENEFITS

- MIMO 4x4 in low-band and mid-band
- Integrated and fieldreplaceable RET
- ACU model number: x2 ACU-A20-SR, ACU HW 05
- Compliant with AISG V2.0 and 3GPP
- AISG jumper cable included
- Mechanical down tilt kit included



Technical features

ELECTRICAL SPECIFICATIONS

Electrical Specification Header		Low Band Arrays (617-894 MHz) Ports 1-4		
Frequency Band	MHz	617-698	698-806	806-894
Gain	dBi	14.1	14.9	15
Azimuth Beamwidth 3dB	Deg	65 +/-2	65 +/-3	62 +/-5
Elevation Beamwidth 3dB	Deg	14.4 +/-1	12.5 +/-1	10.7 +/- .8
Cross-Pol at Boresight	dB	18	18	15
F/B at 180 Copolar	dB	25	28	28
Electrical Downtilt	Deg	2 to 12	2 to 12	2 to 12
First Upper Side Lobe	dB	15	15	14
VSWR	-	1.5:1	1.5:1	1.5:1
Return Loss	dB	-14	-14	-14
Cross Polar Isolation	dB	25	25	25
3rd Order PIM 2 x 46dBm	dBc	-153	-153	-153
Maximum CW Power per Port	Watt	400	400	400
Gain Over All Tilts	dBi	13.4 +/- .7	14.2 +/- .7	14.2 +/- .8
Cross-Pol over Sector	dB	4	4	4
F/B at +/-30 Total Power	dB	16	17	21
Upper Side Lobe Peak to +20	dB	20	15	14



APXVAALL18_43-U-NA20

8-Ports, X-Pol, Panel Antenna, 1.8m, 2x 617-894/2x 1695-2690 MHz 65deg, Integrated RET

ELECTRICAL SPECIFICATIONS

Electrical Specification Header		Mid Band Arrays (1695-2690 MHz) Ports 5-8			
Frequency Band	MHz	1695-1780	1850-1990	1995-2200	2200-2690
Gain	dBi	17.8	18.2	18.5	18.2
Azimuth Beamwidth 3dB	Deg	66 +/-5	64 +/-5	62 +/-8	58 +/-6
Elevation Beamwidth 3dB	Deg	6.0 +/- .2	5.5 +/--.5	5.0 +/--.3	4.5 +/--.5
Cross-Pol at Boresight	dB	21	18	16	18
F/B at 180 Copolar	dB	29	26	25	21
Electrical Downtilt	Deg	2 to 12	2 to 12	2 to 12	2 to 12
First Upper Side Lobe	dB	14	16	17	16
VSWR	-	1.5:1	1.5:1	1.5:1	1.5:1
Return Loss	dB	-14	-14	-14	-14
Cross Polar Isolation	dB	25	25	25	25
3rd Order PIM 2 x 46dBm	dBc	-153	-153	-153	-153
Maximum CW Power per Port	Watt	300	300	300	300
Gain Over All Tilts	dBi	17.0 +/- .6	17.4 +/- .6	17.8 +/- .5	17.5 +/- .6
Cross-Pol over Sector	dB	7	8	9	2
F/B at +/-30 Total Power	dB	22	21	21	19
Upper Side Lobe Peak to +20	dB	14	15	14	12

ELECTRICAL SPECIFICATIONS

Impedance	Ohm	50
Polarization	Deg	+/- 45

MECHANICAL SPECIFICATIONS

Dimensions - H x W x D	mm (in)	1829 x 609 x 215 (72 x 24 x 8.5)
Weight (Antenna Only)	kg (lb)	42 (93)
Weight (Mounting Hardware only)	kg (lb)	7.5 (16.5)
Packing size- HxWxD	mm (in)	2020 x 735 x 285 (80 x 29 x 11.2)
Shipping Weight	kg (lb)	60 (132)
Connector type		8 x 4.3-10 female at bottom
Radome Material / Color		Fiber Glass / Light Grey RAL7035

TESTING AND ENVIRONMENTAL

Temperature Range	°C (°F)	-40 to 60 (-40 to 140)
Lightning protection		Direct Ground
Survival/Rated Wind Velocity	km/h	240 (150)
Wind Load @Rated Wind Front	N	1072
Wind Load @Rated Wind Side	N	326
Wind Load @Rated Wind Rear	N	1160

ORDERING INFORMATION

Order No.	Configuration	Mounting Hardware	Mounting pipe Diameter	Shipping Weight
APXVAALL18_43-U-NA20	ACU-A20-SR Field Replace RET included (2)	APM40-5E Beam tilt kit & APM40-E10T (included)	60-120mm	60 Kg

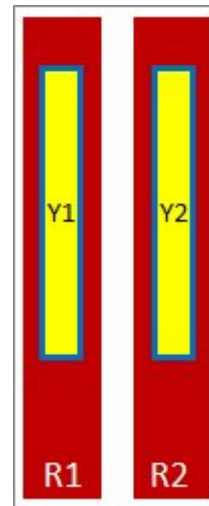
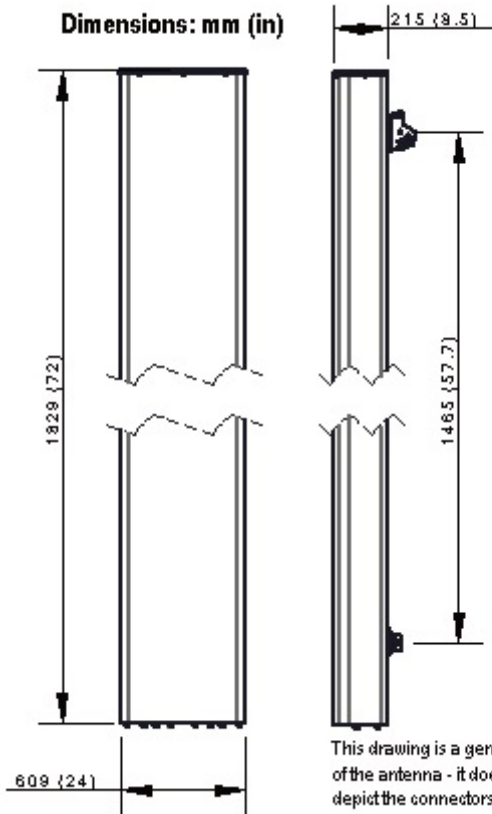


APXVAALL18_43-U-NA20

8-Ports, X-Pol, Panel Antenna, 1.8m, 2x 617-894/2x 1695-2690 MHz 65deg, Integrated RET

Port	Array	Frequency	RET	AISG RET UID
1	R1	617-894	R1	RFxxxxxxxxxx-2R1
2		617-894		
3	R2	617-894		
4		617-894		
5	Y1	1695-2690	Y1	RFxxxxxxxxxx-2Y1
6		1695-2690		
7	Y2	1695-2690		
8		1695-2690		

RET Information		
Frequency	617-894	1695-2690
Model	ACU-A20-SR	ACU-A20-SR
Location	Semi-internal	Semi-Internal
Field Replaceable	Yes	Yes
Quantity	1	1
RET ID	R1	Y1



External Document Links
[APM40_Series_Installation_Instructions](#)

Notes

- All electrical parameters are compliant with BASTA NGMN 11.1 requirements.
- For additional mounting information please click ""External Document Links"".

• Radiating patterns: [Request pattern files](#)



PRODUCT DATASHEET

APXVAALL18_43-U-NA20

8-Ports, X-Pol, Panel Antenna, 1.8m, 2x 617-894/2x 1695-2690 MHz 65deg, Integrated RET

