



BD150*W* Dehydrator Series

BD150*W* Automatic Dehydrator, 110-125 VAC 50/60Hz or 208-253 VAC 50/60Hz

The dehydrator removes the moisture from damp ambient air to deliver a reliable, constant, ondemand source of dry and pressurised air, which is critical to prevent the systems from performance and reliability degradation by condensation. The BD1500W series dehydrators offer pressurization solutions to transmission lines and antennas in both telecom and broadcasting applications. Its low pressure models (suffix LP) are suitable for applications where reduced pressure is required, for example, pressurisation of broadcast antenna radomes, microwave waveguides and other transmission lines. The inherent reliability of the BD series design, combined with the high output capacity and remote real-time data capabilities make these units an ideal choice for pressurisation of systems at unattended sites. The BD1500W Series dehydrators employ a fully digital operating platform offering the most accurate readings of operating variables, either from the front panel or by a remote IP connection.



FEATURES / BENEFITS

- Air Delivery up to 1770L/h
- Operating pressure can be changed by a simple adjustment at the dehydrator
- Available in 110VAC or 220VAC Power Supply • Remote Real-Time Data and Alarm Reset Capabilities
- SNMP Communication Compatible
- Digital Display of All Operating Parameters
- Imperial and Metric Unit of Measure Options
- 8,000 Hour Maintenance Interval
- Compact and Lightweight
- Versatile Installation, Standalone, Optional Rack/Wall Mount
- Ultra Quiet Compressor

Technical features

GENERAL SPECIFICATIONS

Product Type		Automatic Dehydrator			
Model		BD1500W	BD1500WLP	BD1502W	BD1502WLP
max. System Volume @Sea Level	l	14.863			
Output Capacity	l/h	Normal: 1416 Continuous; Maximum: 1770 Emergency			
Output Pressure	kPa (PSIG)	13.8 - 103.4 (2 - 15)	2.07 - 51.71 (0.30 - 7.5)	13.8 - 103.4 (2 - 15)	2.07 - 51.71 (0.30 - 7.5)
Output Air Relative Humidity	%	>2 RH			
Number of Outlets		1			
Output Fitting		Single, 3/8" Press-to-Lock tube fitting			
Noise Level at 3m	dBa	48			
Network Management		via Web Browser or SNMP through RJ-45 Ethernet Connection			

ELECTRICAL SPECIFICATIONS

Operating Voltage	V	110 - 125 VAC, 50 / 60Hz Note: 1	208 - 253 VAC, 50 / 60Hz
Operating Current	A	7	3.5

MECHANICAL SPECIFICATIONS

Dimension H x D x W	cm	68.6 x 30.8 x 43.8
Weight	Kg	36.3

ENVIRONMENTAL

Ambient Temperature Range	°C	+5 to +30 Note: 2
---------------------------	----	-------------------



BD150*W* Dehydrator Series

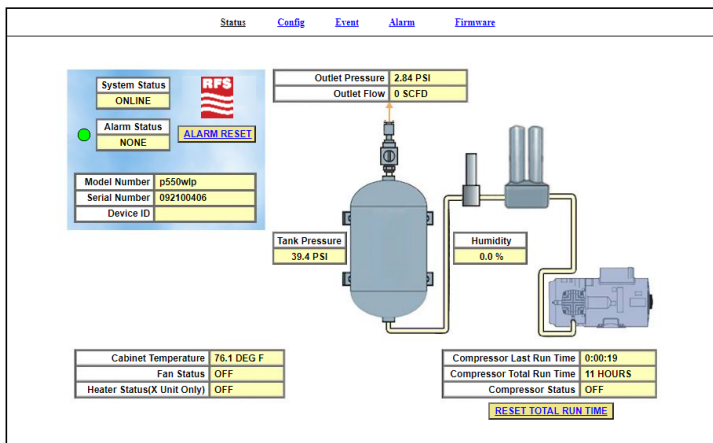
BD150*W* Automatic Dehydrator, 110-125 VAC 50/60Hz or 208-253 VAC 50/60Hz

ALARMS

Alarm	<p>Standard Alarm - Complete readings of all critical measurement points, individual alarm indication display, including SNMP communication.</p> <ul style="list-style-type: none"> High Outlet Pressure Alarm Low Outlet Pressure Alarm High Humidity Alarm High Flow Rate Alarm High Cabinet Temperature Alarm High Compressor Last Run Time Alarm
--------------	--

ACCESSORIES

Model Name	Description
P011910	6-Month Maintenance Kit for BD150*W* Series
P012252	8000 Hour Maintenance Kit for BD150*W* Series
P011674	Universal Rack Mounting Kit for BD150*W* Series
P011773	Wall Mounting Kit for BD150*W* Series
GLK-1	Start up Kit for Dehydrator
PWM2G	2-Port Manifold with Pressure Gauges
PWM2GC	2-Port Manifold with Pressure Gauges & Valves
MLK-2	Start up Kit for 2-Port Manifold
PW4MG	4-Port Manifold with Pressure Gauges
PW4MGC	4-Port Manifold with Pressure Gauges & Valves
MLK-4	Start up Kit for 4-Port Manifold
PWM8G	8-Port Manifold with Pressure Gauges
P8WMGC	8-Port Manifold with Pressure Gauges & Valves
MLK-8	Start up Kit for 8-Port Manifold
TUBE-38OD-PON	Gas inlet adaptor 1/8" NPT for 3/8" OD tube
TUBE-M12-G18	Gas inlet Adapter M12x1.5 - G1/8



Screen image showing remote display of dehydrator status and alarms

[External Document Links](#)
[Dehydrator Sizing Reference Guide](#)

Notes
 Note 1: (15 Amp service recommended)
 Note 2: Unit will go into SHUTDOWN mode if cabinet temperature exceeds 49°C



PRODUCT DATASHEET

BD150*W* Dehydrator Series

BD150*W* Automatic Dehydrator, 110-125 VAC 50/60Hz or 208-253 VAC 50/60Hz

