



**BD55\*W\* Dehydrator Series**

BD55\*W\* Automatic Dehydrator, 110-125 VAC 50/60Hz or 208-253 VAC 50/60Hz

The dehydrator removes the moisture from damp ambient air to deliver a reliable, constant, on demand source of dry and pressurised air, which is critical to prevent the systems from performance and reliability degradation by condensation. The BD550W series dehydrators offer pressurization solutions to transmission lines and antennas in both telecom and broadcasting applications. Its low pressure models (suffix LP) are suitable for applications where reduced pressure is required, for example, pressurisation of broadcast antenna radomes, microwave waveguides and other transmission lines. The inherent reliability of the BD series design, combined with the high output capacity and remote real-time data capabilities make these units an ideal choice for pressurisation of systems at unattended sites. The BD550W Series dehydrators employ a fully digital operating platform offering the most accurate readings of operating variables, either from the front panel or by a remote IP connection.



**FEATURES / BENEFITS**

- Air Delivery up to 649l/h
- Operating pressure can be changed by a simple adjustment at the dehydrator
- Available in 110VAC or 220VAC Power Supply • Remote Real-Time Data and Alarm Reset Capabilities
- SNMP Communication Compatible
- Digital Display of All Operating Parameters
- Imperial and Metric Unit of Measure Options
- 8,000 Hour Maintenance Interval
- Compact and Lightweight
- Versatile Installation, Standalone, Optional Rack/Wall Mount
- Ultra Quiet Compressor

**Technical features**

**GENERAL SPECIFICATIONS**

<b>Product Type</b>		Automatic Dehydrator			
<b>Model</b>		BD550W	BD550WLP	BD552W	BD552WLP
<b>max. System Volume @Sea Level</b>	l	5.455			
<b>Output Capacity</b>	l/h	Normal: 413 Continuous; Maximum: 649 Emergency			
<b>Output Pressure</b>	kPa (PSIG)	13.8 - 103.4 (2 - 15)	2.07 - 51.71 (0.30 - 7.5)	13.8 - 103.4 (2 - 15)	2.07 - 51.71 (0.30 - 7.5)
<b>Output Air Relative Humidity</b>	%	<2 RH			
<b>Number of Outlets</b>		1			
<b>Output Fitting</b>		Single, 3/8" Press-to-Lock tube fitting			
<b>Noise Level at 3m</b>	dBa	48			
<b>Network Management</b>		via Web Browser or SNMP through RJ-45 Ethernet Connection			

**ELECTRICAL SPECIFICATIONS**

<b>Operating Voltage</b>	V	110 - 125 VAC, 50 / 60Hz Note: 1	208 - 253 VAC, 50 / 60Hz
<b>Operating Current</b>	A	7	3.5

**MECHANICAL SPECIFICATIONS**

<b>Dimension H x D x W</b>	cm	68.6 x 30.8 x 43.8
<b>Weight</b>	Kg	33.6

**ENVIRONMENTAL**

<b>Ambient Temperature Range</b>	°C	+5 to +30 Note: 2
----------------------------------	----	-------------------



### BD55\*W\* Dehydrator Series

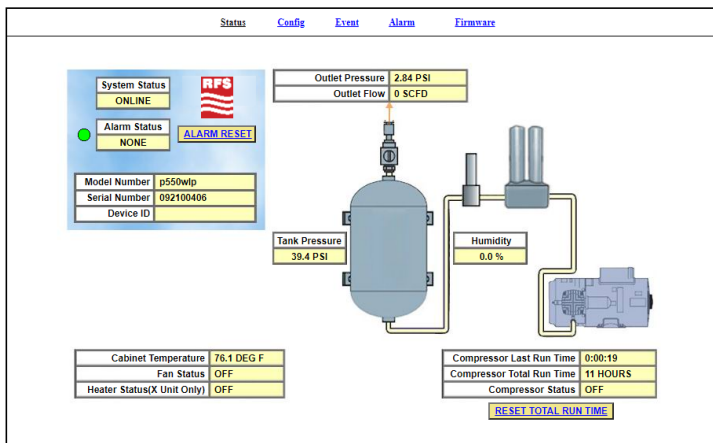
BD55\*W\* Automatic Dehydrator, 110-125 VAC 50/60Hz or 208-253 VAC 50/60Hz

#### ALARMS

<b>Alarm</b>	<p>Standard Alarm - Complete readings of all critical measurement points, individual alarm indication display, including SNMP communication.</p> <ul style="list-style-type: none"> <li>High Outlet Pressure Alarm</li> <li>Low Outlet Pressure Alarm</li> <li>High Humidity Alarm</li> <li>High Flow Rate Alarm</li> <li>High Cabinet Temperature Alarm</li> <li>High Compressor Last Run Time Alarm</li> </ul>
--------------	--

#### ACCESSORIES

Model Name	Description
P013478	6-Month Maintenance Kit for BD55*W* Series
P013479	8000 Hour Maintenance Kit for BD55*W* Series
P011674	Universal Rack Mounting Kit for BD55*W* Series
P011773	Wall Mounting Kit for BD55*W* Series
GLK-1	Start up Kit for Dehydrator
PWM2G	2-Port Manifold with Pressure Gauges
PWM2GC	2-Port Manifold with Pressure Gauges & Valves
MLK-2	Start up Kit for 2-Port Manifold
PWM4G	4-Port Manifold with Pressure Gauges
PWM4GC	4-Port Manifold with Pressure Gauges & Valves
MLK-4	Start up Kit for 4-Port Manifold
PWM8G	8-Port Manifold with Pressure Gauges
PWM8GC	8-Port Manifold with Pressure Gauges & Valves
MLK-8	Start up Kit for 8-Port Manifold
TUBE-38OD-PON	Gas inlet adaptor 1/8" NPT for 3/8" OD tube
TUBE-M12-G18	Gas inlet Adapter M12x1.5 - G1/8



Screen image showing remote display of dehydrator status and alarms

[External Document Links](#)  
[Dehydrator Sizing Reference Guide](#)

**Notes**  
 Note 1: (15 Amp service recommended)  
 Note 2: Unit will go into SHUTDOWN mode if cabinet temperature exceeds 49°C



PRODUCT DATASHEET

**BD55\*W\* Dehydrator Series**

BD55\*W\* Automatic Dehydrator, 110-125 VAC 50/60Hz or 208-253 VAC 50/60Hz

