

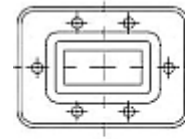


N-Adapter to PDR140, female gasket and screw kit enclosure

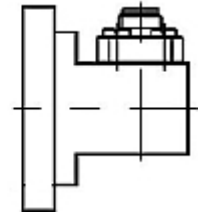
FEATURES / BENEFITS

Waveguide installation

- The rectangular waveguide component provides simple installation in particular difficult cases
- The flange adapter provides proper matching of rectangular waveguide flanges to N-female connector
- It provides outstanding electrical performance



PDR



Coax transition for R120 and smaller waveguides

Technical features

STRUCTURE

Type of Rectangular Waveguide Component		Waveguide to Type N Female Coax Adapter
Waveguide Size IEC (EIA)		R140 (WR62)
Coaxial Interface		N-female
Flange		PDR140
Flange Finish		Brass un-plated

ELECTRICAL SPECIFICATIONS

Frequency Range	GHz	11.9 - 18
Minimum Return Loss (max. VSWR)	dB (VSWR)	19.1 (1.25)

MATERIAL

Material		Brass
Color		Black

PACKAGING INFORMATION

Package Quantity		1
------------------	--	---

External Document Links

Notes