

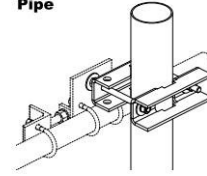


This connecting kit allows to attach the sway bar on any kind of support (pipes or L-sections) without needing to drill holes in the structure.

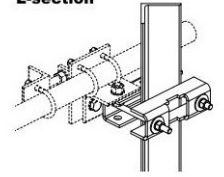
**FEATURES / BENEFITS**

- The RFS universal fixation kit SMA-SKO-UNIVERSAL-L (aka SMA-SKO-UNIV-L) allows to attach the sway bars of RFS 6ft through 15ft antennas onto towers, without drilling holes.
- This kit has been engineered and dimensioned to match all scenarios that occur in the field (pipes and L-sections).
- The kit is made of materials (stainless steel and hot-dip galvanized steel) with proven mechanical and environmental performance.
- Easy to install, less bulky, robust, this kit contributes to a perfect installation of RFS 6ft through 15ft antennas, from both a safety and a sustainability perspective.

**OPTION 1  
Pipe**



**OPTION 2  
L-section**



**Technical features**

**MECHANICAL PROPERTIES**

<b>Weight</b>	kg (lb)	5.6 (12.3)
---------------	---------	------------

**STRUCTURE**

<b>Product Type</b>		Sway Bar Fixation Hardware
<b>Kit Type</b>		Sway Bar / Tower Fixation Kit
<b>Material</b>		Stainless steel & Hot-dip galvanised steel

**External Document Links**

[Sway bar / tower fixation installation kit](#)

**Notes**

Tower pipe compatibility : Ø60mm up to Ø114mm.  
 Tower L-section compatibility : L 60mm x 60mm up to L 110mm x 110mm.  
 Compatible with RFS sway bar models in following diameters : Ø60mm.  
 Approximative weight : 5.6kg.  
 Only the red marked parts are delivered with the kit (see picture).