

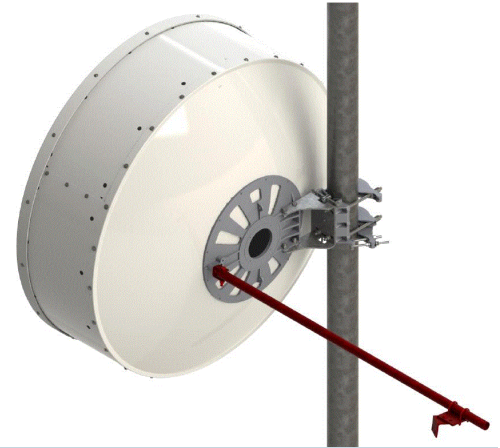


The use of the high wind kit improves the windload performance. The survival windspeed increases to 250 km/h (156 mph).

This kit is compatible with 4ft antenna revision **D**.

This kit is **not** compatible with 4ft antenna revision A, B or C.

FEATURES / BENEFITS



Technical features

MECHANICAL PROPERTIES

Diameter	m (ft)	()
Weight	kg (lb)	4.7 (10.4)
Sway bar length	m (ft)	1.35 (4.43)
SWAYBARDIAMETER	mm (in)	33 (1.3)

STRUCTURE

Product Type		Reinforcement Hardware
Kit Type		Increased Windload
Material		Hot-dip galvanised steel

External Document Links

[Installation Instruction](#)

Notes

The windkit includes only the red marked parts and fixing hardware.
 Only applicable for antennas with casting mount :
 - applicable on all SB4/SBX4 antenna models (CompactLine) revision D.
 - applicable on all 4ft single polarized antenna models from RFS TrunkLine, PrimeLine or Harsh Areas Line and only dual polarized for frequencies above 10GHz (starting at frequency range 103).