



**APXVAR18\_43-C-NA20**

Dual Slant Polarized Dual Band (4 Port) Antenna, 617-746/1695-2200MHz, 65deg, 15.0/18.9dBi, 1.8m(6.0ft), VET, RET, 5-19°/2-12° Tilt Range

**FEATURES / BENEFITS**

This antenna provides a 4 Port multi-band flexible platform for advanced use for flexible use in deployment scenarios for encompassing 600MHz, 700MHz, AWS & PCS applications.

- 16 Inch Width & 68" Length For Easier Zoning
- Rear Fed Connectors For Roof Top Installations
- Field Replaceable (Integrated) AISG RET platform for reduced environmental exposure and long lasting quality
- Superior elevation pattern performance across the entire electrical down tilt range
- Includes two AISG RET motors - Includes 0.5m AISG jumper for optional daisy chaining



**Technical features**

**ELECTRICAL SPECIFICATIONS**

Electrical Specification Header		Low Band Array (617-746 MHz) [R1]	
Frequency Band	MHz	617-698	698-746
Gain Typical	dBi	14.7	15.0
Gain Over All Tilts	dBi	14.1 +/- 0.6	14.4 +/- 0.6
Horizontal Beamwidth @3dB	Deg	66.1+/-1.3	63.8+/-1.7
Vertical Beamwidth @3dB	Deg	15.5 +/- 1.2	14.1 +/- 1.0
Electrical Downtilt Range	Deg	5 to 19	
Upper Side Lobe Suppression 0 to +20	dB	14.7	16.2
Front-to-Back, at +/-30°, Copolar	dB	23.9	24.4
Cross Polar Discrimination (XPD) @ Boresight	dB	19.8	23.3
Cross Polar Discrimination (XPD) @ +/-60	dB	8.8	8.4
3rd Order PIM 2 x 43dBm	dBc	-153	
VSWR	-	1.5:1	
Cross Polar Isolation	dB	25	
Maximum Effective Power per Port	Watt	250	



**APXVAR18\_43-C-NA20**

Dual Slant Polarized Dual Band (4 Port) Antenna, 617-746/1695-2200MHz, 65deg, 15.0/18.9dBi, 1.8m(6.0ft), VET, RET, 5-19°/2-12° Tilt Range

**ELECTRICAL SPECIFICATIONS**

Electrical Specification Header		High Band Array (1695-2200 MHz) [B1]		
Frequency Band	MHz	1695-1880	1850-1990	1920-2200
Gain Typical	dBi	17.8	18.1	18.9
Gain Over All Tilts	dBi	17.5 +/- 0.3	17.6 +/- 0.5	18.2 +/- 0.7
Horizontal Beamwidth @3dB	Deg	66.7+/-3.2	69.1+/-2.2	64.3+/-6.2
Vertical Beamwidth @3dB	Deg	5.8 +/- 0.2	5.5 +/- 0.2	5.1 +/- 0.3
Electrical Downtilt Range	Deg	2 to 12		
Upper Side Lobe Suppression 0 to +20	dB	17.3	17.5	16.6
Front-to-Back, at +/-30°, Copolar	dB	25.6	24.9	26.5
Cross Polar Discrimination (XPD) @ Boresight	dB	24.5	27.4	20.5
Cross Polar Discrimination (XPD) @ +/-60	dB	8.8	10	2.8
3rd Order PIM 2 x 43dBm	dBc	-153		
VSWR	-	1.5:1		
Cross Polar Isolation	dB	25		
Maximum Effective Power per Port	Watt	250		

**ELECTRICAL SPECIFICATIONS**

Impedance	Ohm	50
Polarization	Deg	±45°

**MECHANICAL SPECIFICATIONS**

Dimensions - H x W x D	mm (in)	1726 x 405 x 228 (68 x 16 x 9)
Weight (Antenna Only)	kg (lb)	22 (48.4)
Weight (Mounting Hardware only)	kg (lb)	3.4 (7.5)
Packing size- HxWxD	mm (in)	1835 x 485 x 395 (72.2 x 19.1 x 15.6)
Shipping Weight	kg (lb)	31.5 (69.4)
Connector type		4 x 4.3-10 female on back + 4 AISG connectors (2 male, 2 female)
Adjustment mechanism		Integrated RET solution AISG compliant (Field Replaceable)
Radome Material / Color		ASA / Light Grey RAL7035
Mechanical Distance between Mointing Points	mm (in)	1180 (46.5)

**TESTING AND ENVIRONMENTAL**

Temperature Range	°C (°F)	-40 to 60 (-40 to 140 )
Lightning protection		IEC 61000-4-5, DC Ground
Survival/Rated Wind Velocity	km/h	240 (150 )
Wind Load @Rated Wind Front	N	890
Wind Load @Rated Wind Side	N	448
Wind Load @Rated Wind Rear	N	862
Environmental		ETSI 300-019-2-4 Class 4.1E

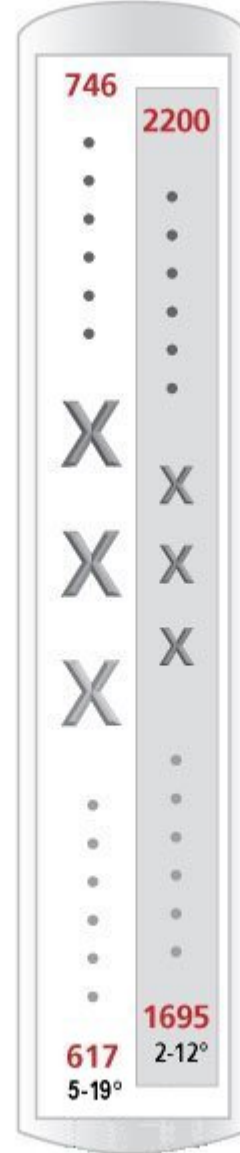
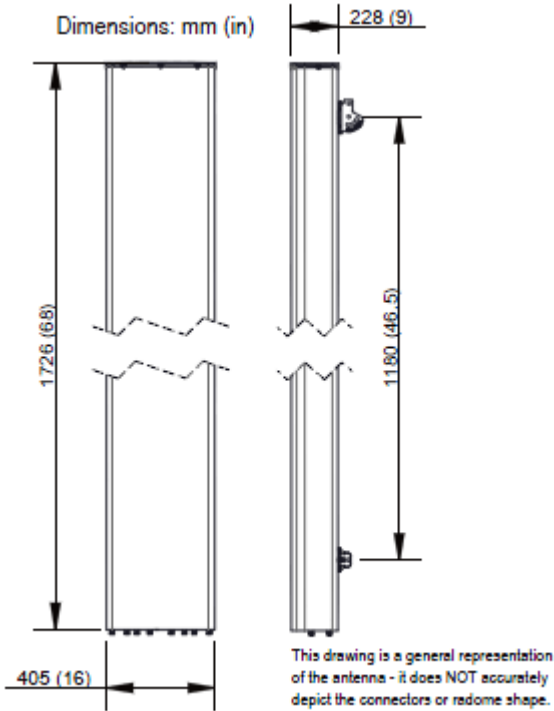
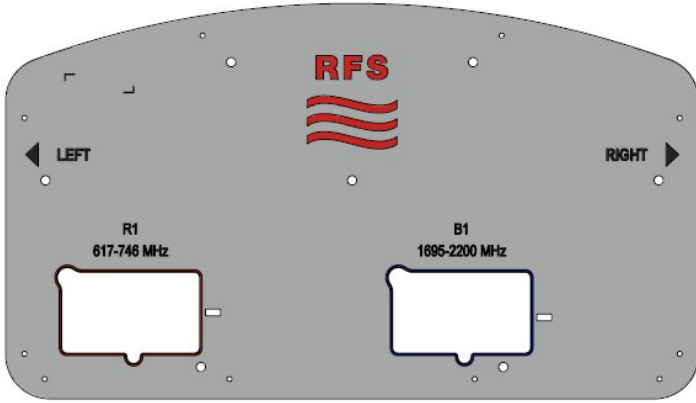


**APXVAR18\_43-C-NA20**

Dual Slant Polarized Dual Band (4 Port) Antenna, 617-746/1695-2200MHz, 65deg, 15.0/18.9dBi, 1.8m(6.0ft), VET, RET, 5-19°/2-12° Tilt Range

**ORDERING INFORMATION**

Order No.	Configuration	Mounting Hardware	Mounting pipe Diameter	Weight
APXVAR18_43-C-NA20	Field Replace RET included (2)	APM40-2 Beam tilt kit (included)	60-120mm	25.4 Kg



APXVAR18 Connector Close Up

External Document Links  
[APM40\\_Series\\_Installation\\_Instructions](#)

Notes  
All electrical parameters are compliant with BASTA NGMN 10.0 requirements.



PRODUCT DATASHEET

**APXVAR18\_43-C-NA20**

Dual Slant Polarized Dual Band (4 Port) Antenna, 617-746/1695-2200MHz, 65deg, 15.0/18.9dBi, 1.8m(6.0ft), VET, RET, 5-19°/2-12° Tilt Range

For additional mounting information please click ""External Document Links"".

- **Radiating patterns:** [Request pattern files](#)