



**APXVARR15\_43-C-NA20**

Dual Slant Polarized Triple Band (6 Port) Antenna, 617-746/1695-2200/1695-2200MHz, 65 deg, 14.7/18.8/19.1dBi, 1.5m (5ft), VET, RET, 5-20°/2-12°/2-12° Tilt Range

**FEATURES / BENEFITS**

This antenna provides a 6 Port multi-band flexible platform for advanced use for flexible use in deployment scenarios for encompassing 600MHz, 700MHz, AWS & PCS applications.

- Field Replaceable (Integrated) AISG RET platform for reduced environmental exposure and long lasting quality.
- Superior elevation pattern performance across the entire electrical down tilt range.
- Includes three AISG RET motors - Includes 0.5m AISG jumper for optional daisy chain of two high band RET motors for one single point of high band AISG tilt control.



**Technical features**

**ELECTRICAL SPECIFICATIONS**

Electrical Specification Header		LOW BAND ARRAY (617-746 MHZ) [R1]	
Frequency Range	MHz	617-698	698-746
Gain Typical	dBi	14.2	14.7
Gain Over All Tilts	dBi	13.8+/-0.4	14.3+/-0.4
Horizontal Beamwidth	deg	65.4+/-1.4	63.7+/-1.2
Vertical Beamwidth	deg	18.0 +/- 1.3	16.2+/-0.9
Electrical Down Tilt Range	deg	5 to 20	
Upper Side Lobe Suppression Peak to +20	dB	22	
Upper Side Lobe Suppression 0 to +20	dB	18.6	16.4
Front to Back Ratio +/-30 Copolar	dB	27.6	28.4
Cross Polar Isolation between ports	dB	25	
Cross Polar Discrimination (XPD) @ Boresight	dB	22.7	22.5
Cross Polar Discrimination (XPD) at +/- 60	dB	10.9	8.5
VSWR		1.5:1	
3rd Order IMP 2 x 43dBm	dBc	-153	
Maximum Power Input	Watts	250	



**APXVARR15\_43-C-NA20**

Dual Slant Polarized Triple Band (6 Port) Antenna, 617-746/1695-2200/1695-2200MHz, 65 deg, 14.7/18.8/19.1dBi, 1.5m (5ft), VET, RET, 5-20°/2-12°/2-12° Tilt Range

**ELECTRICAL SPECIFICATIONS**

Electrical Specification Header		HIGH BAND LEFT ARRAY (1695-2200 MHz) [B1]		
Frequency Range	MHz	1695-1880	1850-1990	1910-2200
Gain Typical	dBi	17.8	18.1	18.8
Gain Over All Tilts	dBi	17.2 +/- 0.6	17.6 +/- 0.5	18.1 +/- 0.7
Horizontal Beamwidth	deg	61.4 +/- 2.9	62.9 +/- 1.4	61.8 +/- 2.0
Vertical Beamwidth	deg	7.3 +/- 0.6	6.7 +/- 0.3	6.1 +/- 0.5
Electrical Down Tilt Range	deg	2 to 12		
Upper Side Lobe Suppression Peak to +20	dB	17.5	18.8	18.5
Upper Side Lobe Suppression 0 to +20	dB	17.0	16.2	13.8
Front to Back Ratio +/-30 Copolar	dB	28.6	27.7	27.8
Cross Polar Isolation between ports	dB	25		
Cross Polarization (XPD) @ Boresight	dB	27.8	26.4	18.5
Cross Polarization (XPD) @ +/-60	dB	8.1	12.5	8.5
VSWR		1.5:1		
3rd Order IMP 2 x 43dBm	dBc	-153		
Maximum Power Input	Watts	250		

**ELECTRICAL SPECIFICATIONS**

Electrical Specification Header		HIGH BAND RIGHT ARRAY (1695-2200 MHz) [B2]		
Frequency Range	MHz	1695-1880	1850-1990	1910-2200
Gain Typical	dBi	17.8	18.1	19.1
Gain Over All Tilts	dBi	17.3 +/- 0.5	17.6 +/- 0.5	18.3 +/- 0.8
Horizontal Beamwidth	deg	62 +/- 3.2	64.1 +/- 1.7	61.6 +/- 3.2
Vertical Beamwidth	deg	7.2 +/- 0.5	6.7 +/- 0.3	6.1 +/- 0.5
Electrical Down Tilt Range	deg	2 to 12		
Upper Side Lobe Suppression Peak to +20	dB	17.0	17.6	17.7
Upper Side Lobe Suppression 0 to +20	dB	16.6	15.7	14.2
Front to Back Ratio +/-30 Copolar	dB	29.3	27.7	27.6
Cross Polar Isolation between Ports	dB	25		
Cross Polarization (XPD) @ Boresight	dB	26.6	22.7	19.8
Cross Polarization (XPD) @ +/-60	dB	8.7	12.6	9.9
VSWR		1.5:1		
3rd Order IMP 2 x 43dBm	dBc	-153		
Maximum Power Input	Watts	250		



**APXVARR15\_43-C-NA20**

Dual Slant Polarized Triple Band (6 Port) Antenna, 617-746/1695-2200/1695-2200MHz, 65 deg, 14.7/18.8/19.1dBi, 1.5m (5ft), VET, RET, 5-20°/2-12°/2-12° Tilt Range

**ELECTRICAL SPECIFICATIONS**

Impedance	Ohm	50
Polarization	Deg	+/-45°

**MECHANICAL SPECIFICATIONS**

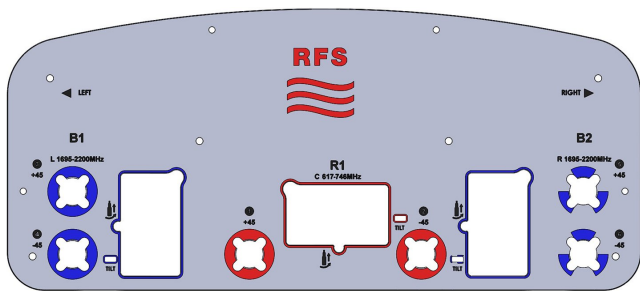
Dimensions - H x W x D	mm (in)	1524 x 500 x 216 (60 x 19.7 x 8.5)
Weight (Antenna Only)	kg (lb)	27.8 (61.1)
Weight (Mounting Hardware only)	kg (lb)	3.3 (7.3)
Packing size- HxWxD	mm (in)	1640 x 560 x 410 (64.6 x 22 x 16.21)
Shipping Weight	kg (lb)	36.8 (81.1)
Connector type		6 x 4.3-10 Long Neck Female/Bottom + 6 AISG RET connectors (3 male, 3 female)
Adjustment mechanism		Integrated RET solution AISG compliant (Field Replaceable)
Mounting Hardware Material		Diecast Aluminium and Galvanized steel
Radome Material / Color		ASA / Light Grey RAL7035
Mechanical Distance between Mointing Points	mm (in)	1300 (51.2)

**TESTING AND ENVIRONMENTAL**

Temperature Range	°C (°F)	-40 to 60 (-40 to 140 )
Lightning protection		Direct Ground
Survival/Rated Wind Velocity	km/h	240 (150 )
Wind Load @Rated Wind Front	N	483
Wind Load @Rated Wind Side	N	248
Wind Load @Rated Wind Rear	N	574

**ORDERING INFORMATION**

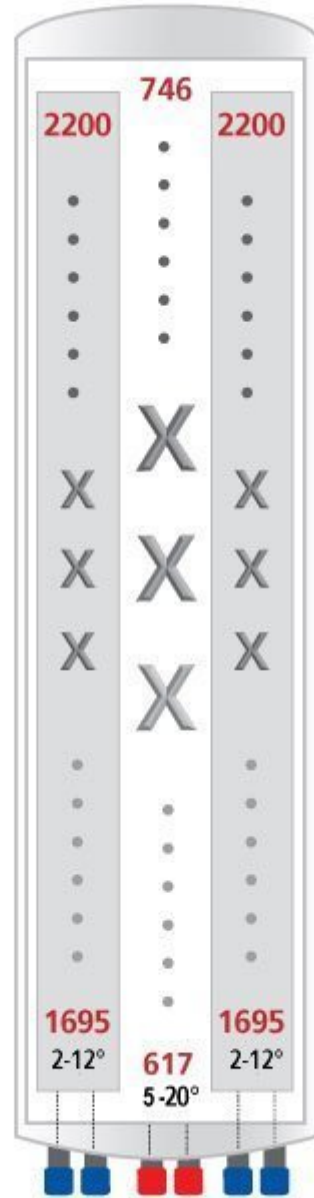
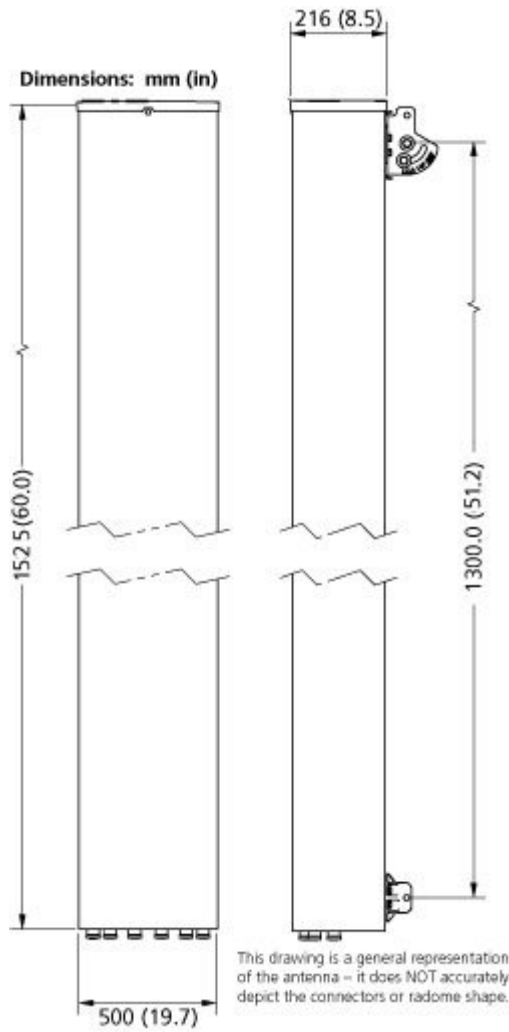
Order No.	Configuration	Mounting Hardware	Mounting pipe Diameter	Weight
APXVARR15_43-C-NA20	Field Replaceable RET (3)	APM40-2	60-120mm	31.1 kg (68.6 lbs)





**APXVARR15\_43-C-NA20**

Dual Slant Polarized Triple Band (6 Port) Antenna, 617-746/1695-2200/1695-2200MHz, 65 deg, 14.7/18.8/19.1dBi, 1.5m (5ft), VET, RET, 5-20°/2-12°/2-12° Tilt Range



[External Document Links](#)  
[APM40\\_Series\\_Installation\\_Instructions](#)

**Notes**  
 All electrical parameters are compliant with BASTA NGMN 10.0 requirements.

For additional mounting information please click ""External Document Links"".

This data is provisional and subject to changes.  
 • **Radiating patterns:** [Request pattern files](#)