



**FEATURES / BENEFITS**

- 4 ports / 2 cross pol systems in low band (698-960MHz)
- Supporting 4x4 MIMO
- Integrated and field replaceable SRET
- ACU HW Version: 2.02
- Compliant with AISG V2.0 and 3GPP



**Technical features**

**ELECTRICAL SPECIFICATIONS**

Electrical Specification Header		LOW BAND ARRAY (698-960 MHz) [R1]		
Frequency Band	MHz	698 - 806	790 - 894	880 - 960
Gain Typical	dBi	15	15.2	15.7
Gain Over all Tilts	dBi	14 +/- 1	14.7 +/- 0.5	15.2 +/- 0.5
Azimuth Beamwidth 3dB	Deg	60.4 +/- 4	59.2 +/- 5.5	63.5 +/- 3.5
Elevation Beamwidth 3dB	Deg	16.7 +/- 1	15.5 +/- 1	14.3 +/- 0.5
Cross Polar Discrimination at Boresight	dB	24	27	23
Cross Polar Discrimination over Sector	dB	13	9.7	8
F/B at +/-30deg Total Power	dB	21	21	22
First Upper Side Lobe Suppression	dB	14.8	21.9	16
Electrical Downtilt	Deg	2 to 15		
Cross Polar Isolation	dB	26		
Interband Isolation	dB	26		
VSWR	-	1.5		
Passive Intermodulation (3rd Order, 2 x 43dBm)	dBc	-153		
Maximum Effective Power per Port	Watt	350		

**ELECTRICAL SPECIFICATIONS**

Electrical Specification Header		LOW BAND ARRAY (698-960 MHz) [R2]		
Frequency Band	MHz	698 - 806	790 - 894	880 - 960
Gain Typical	dBi	15.2	16.1	15.9
Gain Over all Tilts	dBi	14.2 +/- 1	15.1 +/- 1	15.4 +/- 0.5
Azimuth Beamwidth 3dB	Deg	60.7 +/- 4	58.6 +/- 4.5	63.7 +/- 3.9
Elevation Beamwidth 3dB	Deg	16.8 +/- 1	15.4 +/- 1	14.2 +/- 0.5
Cross Polar Discrimination at Boresight	dB	27	28	26
Cross Polar Discrimination over Sector	dB	14	8.4	7
F/B at +/-30deg Total Power	dB	22	22	23
First Upper Side Lobe Suppression	dB	16	21	15
Electrical Downtilt	Deg	2 to 15		
Cross Polar Isolation	dB	26		
Interband Isolation	dB	26		
VSWR	-	1.5		
Passive Intermodulation (3rd Order, 2 x 43dBm)	dBc	-153		
Maximum Effective Power per Port	Watt	350		

**ELECTRICAL SPECIFICATIONS**

Impedance	Ohm	50
Polarization	Deg	±45°

**MECHANICAL SPECIFICATIONS**

Dimensions - H x W x D	mm (in)	1590 x 499 x 199 (62.6 x 19.6 x 7.8)
Weight (Antenna Only)	kg (lb)	24.5 (54)
Weight (Mounting Hardware only)	kg (lb)	4.5 (9.9)
Packing size- HxWxD	mm (in)	1860 x 575 x 275 (73.2 x 22.6 x 10.8)
Shipping Weight	kg (lb)	35 (77.2)
Connector type		4 x 4.3-10 Female at bottom + 2 AISG connectors (1 male, 1 female)
Radome Material / Color		Fiberglass / Light Grey RAL7035

**TESTING AND ENVIRONMENTAL**

Temperature Range	°C (°F)	-40 to 60 (-40 to 140 )
Lightning protection		Direct Ground
Survival/Rated Wind Velocity	km/h	200 (150 )
Wind Load @Rated Wind Front	N	526
Wind Load @Rated Wind Side	N	459
Wind Load @Rated Wind Rear	N	610

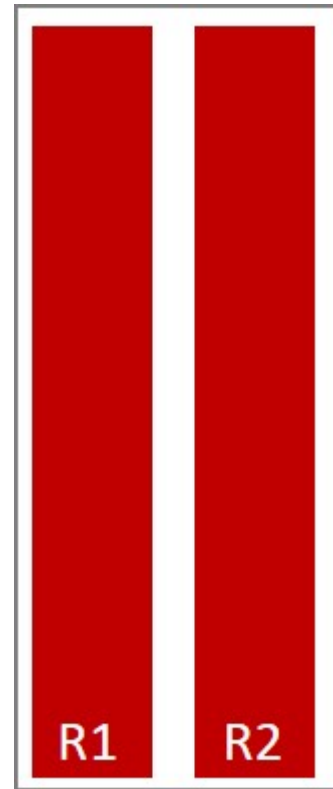
**ORDERING INFORMATION**

Order No.	Configuration	Mounting Hardware	Mounting pipe Diameter	Shipping Weight
APXVBB15B 43-C-I20	Internal RET (ACU-I20-B2)	APM50-B1	50-110mm	35 kg

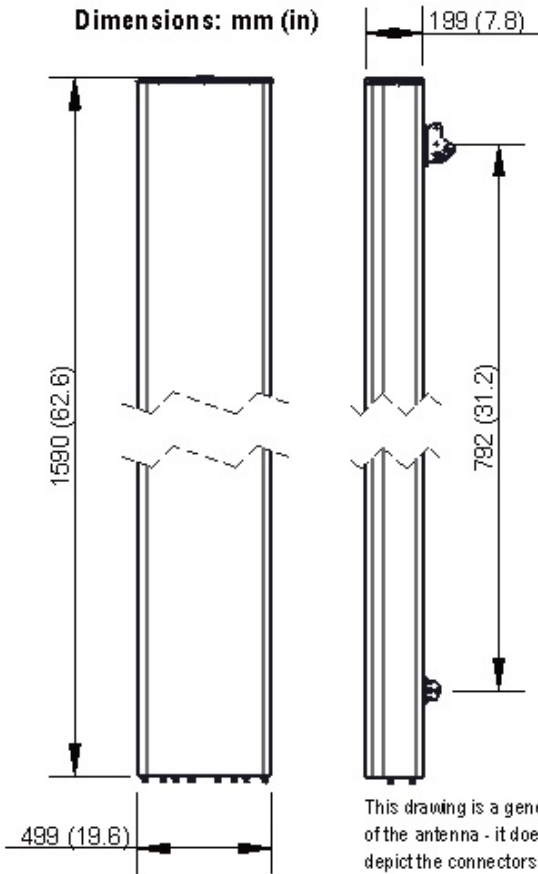


APXVBB15B\_43-C-I20

4-Ports, X-Pol, Panel Antenna, 1.5m, 2x 698-960MHz 65deg, Integrated RET



Dimensions: mm (in)





**External Document Links**

[APM50\\_Series\\_Installation\\_Instructions](#)

**Notes**

- All electrical parameters are compliant with BASTA NGMN 11.1 requirements.
- For additional mounting information please click "External Document Links".
- **Radiating patterns:** [Request pattern files](#)