



APXVBB15X_43-C-I20

RF X-TREME™ 4-port Antenna, 1.5m, 698-960 / 698-960 MHz, 65deg, 14.5 / 14.5 dBi, 0-15°/0-15°, Internal RET

FEATURES / BENEFITS

This antenna provides an 4-port multi-band flexible platform for advanced use in low bands.

- 4 ports / 2 cross pol systems in low band
- Integrated RET platform and manual overdrive
- Slim radome design for optimun windload
- MIMO 4x4 for 700, 800 or 900MHz applications



Technical features

ELECTRICAL SPECIFICATIONS

Electrical Specification Header		LOW BAND ARRAY (698-960 MHZ) [R1]		
Frequency Band	Mhz	698-803	790 - 862	880 - 960
Polarization	-	Slant +/- 45		
Impedance	Ohms	50		
Passive Intermodulation	dBc	< -153		
Maximum Effective Power per Port	Watts	500		
Gain	dBi	14.0	14.0	14.5
VSWR	-	< 1.5:1		
Isolation between ports	dB	> 28		
Azimuth Beamwidth 3dB	Deg	73+/-5	70+/-4	65+/-3
Front-to-Back, at +/-30, Total Power	dB	> 18	> 19	> 20
Elevation Beamwidth 3 dB	Deg	16.5+/-2.5	14.5+/-1.5	13+/-1.5
Electrical Downtilt	Deg	0 to 15		
Cross Polarization Ratio @ Boresight	dB	> 21	> 21	> 24
Cross Polarization Ratio @ +/- 60	dB	> 9	> 8	> 5
Upper Side Lobe Suppression Peak to +20	dB	> 15		



APXVBB15X_43-C-I20

RF X-TREME™ 4-port Antenna, 1.5m, 698-960 / 698-960 MHz, 65deg, 14.5 / 14.5 dBi, 0-15°/0-15°, Internal RET

ELECTRICAL SPECIFICATIONS

Electrical Specification Header		LOW BAND ARRAY (698-960 MHZ) [R2]		
Frequency Band	Mhz	698-803	790 - 862	880 - 960
Polarization	-	Slant +/- 45		
Impedance	Ohms	50		
Passive Intermodulation	dBc	< -153		
Maximum Effective Power per Port	Watts	500		
Gain	dBi	14.0	14.0	14.5
VSWR	-	< 1.5:1		
Isolation between ports	dB	> 28		
Azimuth Beamwidth 3dB	Deg	73+/-5	70+/-4	65+/-3
Front-to-Back, at +/-30, Total Power	dB	> 18	> 19	> 20
Elevation Beamwidth 3 dB	Deg	16.5+/-2.5	14.5+/-1.5	13+/-1.5
Electrical Downtilt	Deg	0 to 15	0 to 15	0 to 15
Cross Polarization Ratio @ Boresight	dB	> 21	> 21	> 24
Cross Polarization Ratio @ +/-60	dB	> 9	> 8	> 5
Upper Side Lobe Suppression Peak to +20	dB	> 15		

MECHANICAL SPECIFICATIONS

Dimensions - H x W x D	mm (in)	1495 x 500 x 215 (58.8 x 19.7 x 8.5)		
Weight (Antenna Only)	kg (lb)	24 (0)		
Weight (Mounting Hardware only)	kg (lb)	3.3 (0)		
Packing size- HxWxD	mm (in)	1620 x 546 x 390 (63.8 x 21.5 x 15.4)		
Shipping Weight	kg (lb)	33.5 (0)		
Connector type		4 x 4.3-10 Female at bottom + 2 AISG connectors (1 male, 1 female)		
Adjustment mechanism		Integrated Ret solution AISG 1.1 and 2.0 compliant with manual overdrive		
Radome Material / Color		ASA / Light Grey RAL7035		

TESTING AND ENVIRONMENTAL

Temperature Range	°C (°F)	-40 to 60 (-40 to 140)		
Lightning protection		Direct Ground		
Survival/Rated Wind Velocity	km/h	200 (150)		
Wind Load @Rated Wind Front	N	757		
Wind Load @Rated Wind Side	N	278		
Wind Load @Rated Wind Rear	N	858		

ORDERING INFORMATION

Order No.	Configuration	Mounting Hardware	Mounting pipe Diameter	Weight
APXVBB15X_43-C-I20	Internal RET included	APM40-2 Beam tilt kit	60-120mm	33.5 kg

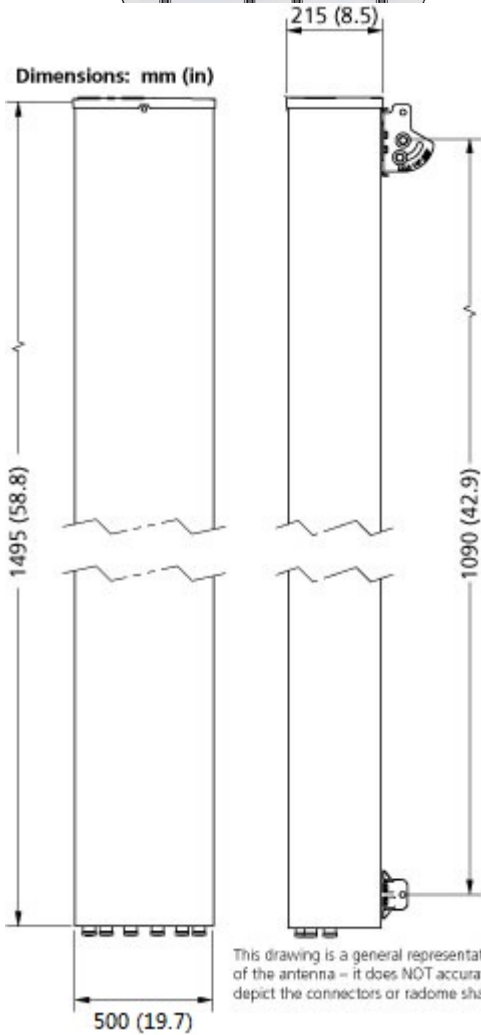


APXVBB15X_43-C-I20

RF X-TREME™ 4-port Antenna, 1.5m, 698-960 / 698-960 MHz, 65deg, 14.5 / 14.5 dBi, 0-15°/0-15°, Internal RET



Dimensions: mm (in)



This drawing is a general representation of the antenna – it does NOT accurately depict the connectors or radome shape.



External Document Links

[APM40_Series_Installation_Instructions](#)

Notes

All electrical parameters are following NGMN 9.6 BASTA requirements.

For additional mounting information please click ""External Document Links"".

- Radiating patterns: [Request pattern files](#)