



FEATURES / BENEFITS

- 4 ports / 2 cross pol systems in low band (698-960MHz)
- Supporting 4x4 MIMO
- Integrated and field replaceable SRET
- ACU HW Version -2.02 / SW Version -2.72
- Compliant with AISG V2.0 and 3GPP



Technical features

ELECTRICAL SPECIFICATIONS

Electrical Specification Header		LOW BAND ARRAY (698-960 MHz) [R1]		
Frequency Band	MHz	698 - 806	790 - 894	880 - 960
Gain Typical	dBi	15.2	16	16.1
Gain Over all Tilts	dBi	14.7 +/- 0.5	15.5 +/- 0.5	15.6 +/- 0.5
Azimuth Beamwidth 3dB	Deg	61.6+/-3	62.4+/-6	69.1+/-3.6
Elevation Beamwidth 3dB	Deg	11.6+/-0.5	10.7+/-0.5	10.2+/-0.5
Cross Polar Discrimination at Boresight	dB	19	24	20
Cross Polar Discrimination over Sector	dB	12	10	10
F/B at +/-30deg Total Power	dB	23	23	23
First Upper Side Lobe Suppression	dB	22	17	13
Electrical Downtilt	Deg	2 to 12		
Cross Polar Isolation	dB	26		
Interband Isolation	dB	26		
VSWR	-	1.5		
Passive Intermodulation (3rd Order, 2 x 43dBm)	dBc	-153		
Maximum Effective Power per Port	Watt	350		



ELECTRICAL SPECIFICATIONS

Electrical Specification Header		LOW BAND ARRAY (698-960 MHz) [R2]		
Frequency Band	MHz	698 - 806	790 - 894	880 - 960
Gain Typical	dBi	15.2	16	16.1
Gain Over all Tilts	dBi	14.7 +/- 0.5	15.5 +/- 0.5	15.6 +/- 0.5
Azimuth Beamwidth 3dB	Deg	61.6+/-3	62.4+/-6	69.1+/-3.6
Elevation Beamwidth 3dB	Deg	11.6+/-0.5	10.7+/-0.5	10.2+/-0.5
Cross Polar Discrimination at Boresight	dB	19	24	20
Cross Polar Discrimination over Sector	dB	12	10	10
F/B at +/-30deg Total Power	dB	23	23	23
First Upper Side Lobe Suppression	dB	22	17	13
Electrical Downtilt	Deg	2 to 12		
Cross Polar Isolation	dB	26		
Interband Isolation	dB	26		
VSWR	-	1.5		
Passive Intermodulation (3rd Order, 2 x 43dBm)	dBc	-153		
Maximum Effective Power per Port	Watt	350		

ELECTRICAL SPECIFICATIONS

Impedance	Ohm	50
Polarization	Deg	±45°

MECHANICAL SPECIFICATIONS

Dimensions - H x W x D	mm (in)	1990 x 499 x 199 (78.3 x 19.6 x 7.8)
Weight (Antenna Only)	kg (lb)	34 (75)
Weight (Mounting Hardware only)	kg (lb)	4.5 (9.9)
Packing size- HxWxD	mm (in)	2260 x 575 x 275 (89 x 22.6 x 10.8)
Shipping Weight	kg (lb)	43 (94.8)
Connector type		4 x 7/16 Female at bottom + 2 AISG connectors (1 male, 1 female)
Radome Material / Color		Fiberglass / Light Grey RAL7035

TESTING AND ENVIRONMENTAL

Temperature Range	°C (°F)	-40 to 60 (-40 to 140)
Lightning protection		Direct Ground
Survival/Rated Wind Velocity	km/h	200 (150)
Wind Load @Rated Wind Front	N	659
Wind Load @Rated Wind Side	N	574
Wind Load @Rated Wind Rear	N	764

ORDERING INFORMATION

Order No.	Configuration	Mounting Hardware	Mounting pipe Diameter	Shipping Weight
APXVBB20B-C-I20	Internal RET (ACU-I20-B2)	APM50-B1	50-110mm	43 kg

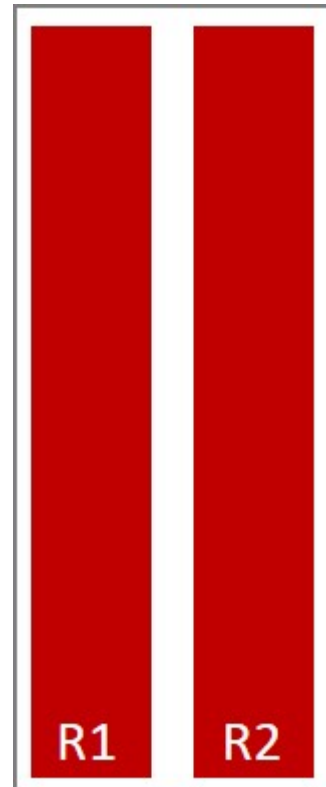
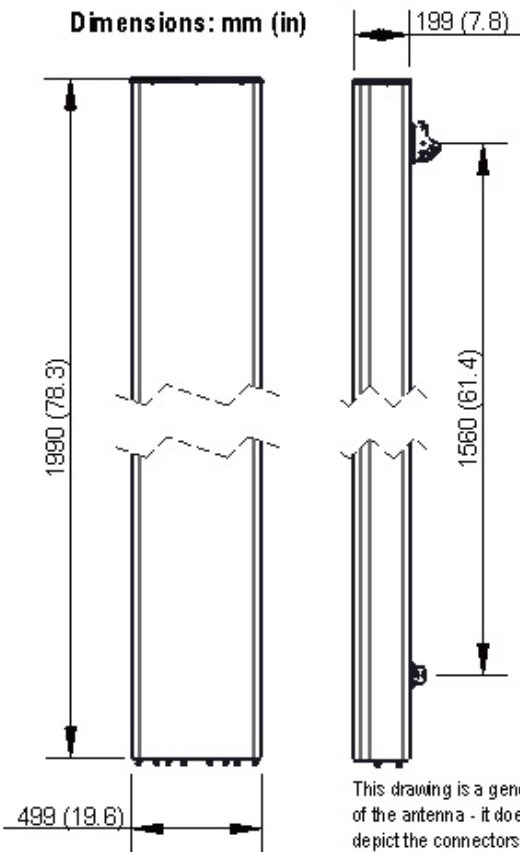


APXVBB20B-C-I20

4-port Antenna, 2.0m, 698-960 / 698-960 MHz, 65deg, 16.1 / 16.1 dBi, 2-12deg, Integrated RET



Dimensions: mm (in)



External Document Links

[APM50_Series_Installation_Instructions](#)

Notes

- All electrical parameters are compliant with BASTA NGMN 11.1 requirements.
- For additional mounting information please click "External Document Links".
- **Radiating patterns:** [Request pattern files](#)