



FEATURES / BENEFITS

- 4 ports / 2 cross pol systems in low band (698-960MHz)
- Supporting 4x4 MIMO
- Integrated and field replaceable SRET
- ACU HW Version: 2.02
- Compliant with AISG V2.0 and 3GPP



Technical features

ELECTRICAL SPECIFICATIONS

Electrical Specification Header		LOW BAND ARRAY (698-960 MHz) [R1]		
Frequency Band	MHz	698 - 806	790 - 894	880 - 960
Gain Typical	dBi	15.7	16.2	16.8
Gain Over all Tilts	dBi	15.2 +/- 0.5	15.7 +/- 0.5	15.8 +/- 1
Azimuth Beamwidth 3dB	Deg	62.2 +/- 5.9	57.2 +/- 3.1	57.5 +/- 4.4
Elevation Beamwidth 3dB	Deg	11.2 +/- 1	10 +/- 0.5	9.2 +/- 0.5
Cross Polar Discrimination at Boresight	dB	13	19	22.7
Cross Polar Discrimination over Sector	dB	7.5	10	2
F/B at +/-30deg Total Power	dB	20	21	18
First Upper Side Lobe Suppression	dB	15.7	17	16
Electrical Downtilt	Deg	2 to 12		
Cross Polar Isolation	dB	26		
Interband Isolation	dB	26		
VSWR	-	1.5		
Passive Intermodulation (3rd Order, 2 x 43dBm)	dBc	-153		
Maximum Effective Power per Port	Watt	350		



ELECTRICAL SPECIFICATIONS

Electrical Specification Header		LOW BAND ARRAY (698-960 MHz) [R2]		
Frequency Band	MHz	698 - 806	790 - 894	880 - 960
Gain Typical	dBi	15.7	16.2	16.8
Gain Over all Tilts	dBi	15.2 +/- 0.5	15.7 +/- 0.5	15.8 +/- 1
Azimuth Beamwidth 3dB	Deg	61.6 +/- 5	57.4 +/- 4.5	55.2 +/- 6
Elevation Beamwidth 3dB	Deg	11.4 +/- 1.5	10.2 +/- 0.6	9.2 +/- 0.5
Cross Polar Discrimination at Boresight	dB	13	17	21
Cross Polar Discrimination over Sector	dB	8	11	7
F/B at +/-30deg Total Power	dB	19	23	20.3
First Upper Side Lobe Suppression	dB	16	17	16.2
Electrical Downtilt	Deg	2 to 12		
Cross Polar Isolation	dB	26		
Interband Isolation	dB	26		
VSWR	-	1.5		
Passive Intermodulation (3rd Order, 2 x 43dBm)	dBc	-153		
Maximum Effective Power per Port	Watt	350		

ELECTRICAL SPECIFICATIONS

Impedance	Ohm	50
Polarization	Deg	±45°

MECHANICAL SPECIFICATIONS

Dimensions - H x W x D	mm (in)	1990 x 499 x 199 (78.3 x 19.6 x 7.8)
Weight (Antenna Only)	kg (lb)	34 (75)
Weight (Mounting Hardware only)	kg (lb)	4.5 (9.9)
Packing size- HxWxD	mm (in)	2260 x 575 x 275 (89 x 22.6 x 10.8)
Shipping Weight	kg (lb)	43 (94.8)
Connector type		4 x 4.3-10 Female at bottom + 2 AISG connectors (1 male, 1 female)
Radome Material / Color		Fiberglass / Light Grey RAL7035

TESTING AND ENVIRONMENTAL

Temperature Range	°C (°F)	-40 to 60 (-40 to 140)
Lightning protection		Direct Ground
Survival/Rated Wind Velocity	km/h	200 (150)
Wind Load @Rated Wind Front	N	659
Wind Load @Rated Wind Side	N	574
Wind Load @Rated Wind Rear	N	764

ORDERING INFORMATION

Order No.	Configuration	Mounting Hardware	Mounting pipe Diameter	Shipping Weight
APXVBB20B_43-C-I20	Internal RET (ACU-I20-B2)	APM50-B1	50-110mm	43 kg

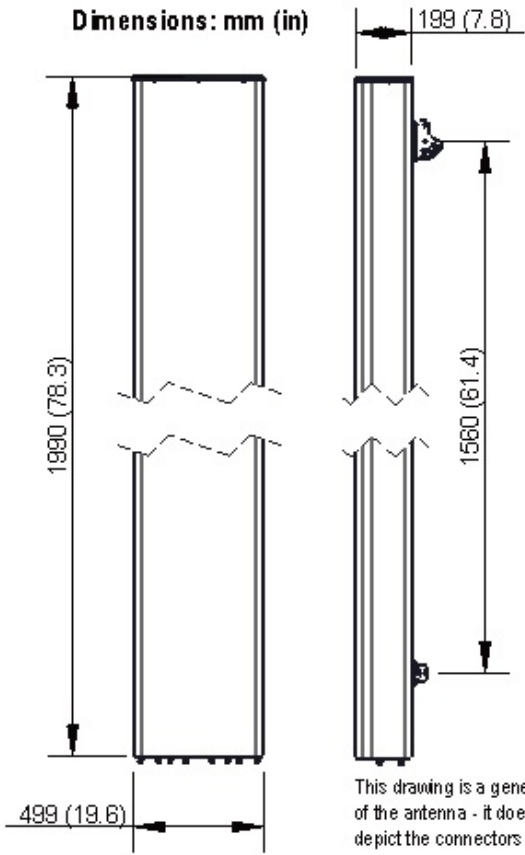


APXVBB20B_43-C-I20

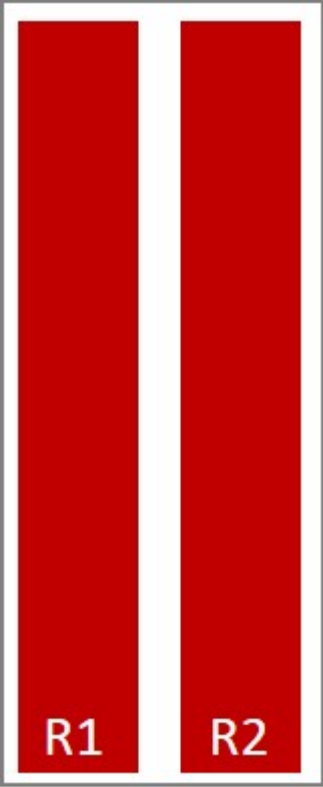
4-Ports, X-Pol, Panel Antenna, 2.0m, 2x 698-960MHz, 65deg, Integrated RET



Dimensions: mm (in)



This drawing is a general representation of the antenna - it does NOT accurately depict the connectors or radome shape.



External Document Links
[APM50_Series_Installation_Instructions](#)

- Notes
- All electrical parameters are compliant with BASTA NGMN 11.1 requirements.
 - For additional mounting information please click "External Document Links".
 - **Radiating patterns:** [Request pattern files](#)