



FEATURES / BENEFITS

This antenna provides an 4-port multi-band flexible platform for advanced use in low bands.

- 4 ports / 2 cross pol systems in low band
- Integrated RET platform and manual overdrive
- Slim radome design for optimun windload
- MIMO 4x4 for 700 or 800 and support of 900MHz legacy applications



Technical features

ELECTRICAL SPECIFICATIONS

Electrical Specification Header		ELECTRICAL SPECIFICATIONS R1		
Frequency Band	Mhz	698-803	790 - 862	880 - 960
Polarization	-	Slant +/- 45		
Impedance	Ohms	50		
Passive Intermodulation	dBc	-153		
Maximum Effective Power per Port	Watts	500		
Gain Typical	dBi	15.4	16.0	16.5
Gain Over All Tilts	dBi	14.8 +/- 0.6	15.4 +/-0.6	15.9 +/-0.6
VSWR	-	1.5:1		
Return Loss	dB	14		
Cross Polar Isolation	dB	28		
Azimuth Beamwidth 3dB	Deg	73+/-3.6	69.2+/-3.3	62.5+/-3.3
Front-To-Back, at +/-30 Total Power	dB	21.8	22.5	21.5
Elevation Beamwidth 3 dB	Deg	10.5+/-0.8	9.9+/-0.4	9+/-0.5
Electrical Downtilt	Deg	0 to 10		
Elevation Downtilt Deviation	Deg	0.58	0.44	0.62
Upper Side Lobe Suppression Peak to +20	dB	16.8	16	15.9



ELECTRICAL SPECIFICATIONS

Electrical Specification Header	ELECTRICAL SPECIFICATIONS R2		
Frequency Band	Mhz	698-803	790 - 862 880 - 960
Polarization	-	Slant +/- 45	
Impedance	Ohms	50	
Passive Intermodulation	dBc		
Maximum Effective Power per Port	Watts	500	
Gain Typical	dBi	15.4	15.9 16.5
Gain Over All Tilts	dBi	14.8 +/- 0.6	15.4 +/-0.5 15.9 +/-0.6
VSWR	-	1.5:1	
Return Loss	dB	14	
Cross Polar Isolation	dB	28	
Azimuth Beamwidth 3dB	Deg	73.1+/-4.1	69.3+/-2.7 62.9+/-3.2
Frotn-To-Back, at +/-30 Total Power	dB	21.3	21.9 21.8
Elevation Beamwidth 3 dB	Deg	10.6+/-0.9	9.8+/-0.5 9+/-0.5
Electrical Downtilt	Deg	0 to 10	
Elevation Downtilt Deviation	Deg	0.6	0.31 0.66
Upper Side Lobe Suppression Peak to +20	dB	16.8	16 16.2

MECHANICAL SPECIFICATIONS

Dimensions - H x W x D	mm (in)	2064 x 499 x 215 (81.2 x 19.6 x 8.5)	
Weight (Antenna Only)	kg (lb)	31.66 (69.79)	
Weight (Mounting Hardware only)	kg (lb)	3.3 (7.28)	
Packing size- HxWxD	mm (in)	2243 x 564 x 415 (86.6 x 22.4 x 13.8)	
Shipping Weight	kg (lb)	42.66 (94.04)	
Connector type		4 x 4.3-10 Female at bottom + 2 AISG connectors (1 male, 1 female)	
Adjustment mechanism		Integrated Ret solution AISG 1.1 and 2.0 compliant with manual overdrive	
Mounting Hardware Material		Diecast Aluminium and Galvanized steel	
Radome Material / Color		ASA / Light Grey RAL7035	

TESTING AND ENVIRONMENTAL

Temperature Range	°C (°F)	-40 to 60 (-40 to 140)	
Lightning protection		Direct Ground	
Survival/Rated Wind Velocity	km/h	200 (150)	
Wind Load @Rated Wind Front	N	1045	
Wind Load @Rated Wind Side	N	384	
Wind Load @Rated Wind Rear	N	1184	
Environmental		ETSI 300-019-2-4 Class 4.1E	

ORDERING INFORMATION

Order No.	Configuration	Mounting Hardware	Mounting pipe Diameter	Weight
APXVBB20X3_43-C-I20	Internal RET included	APM40-2 Beam tilt kit	60-120mm	42.66 kg

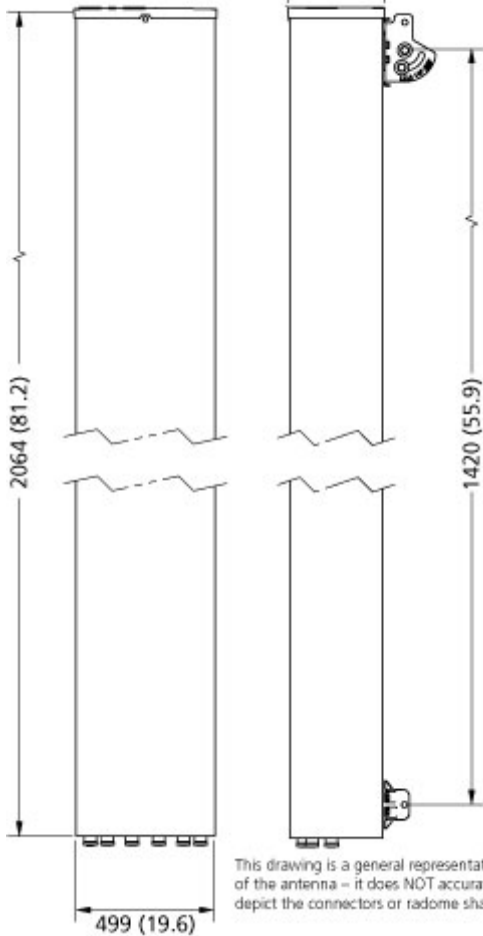


APXVBB20X3_43-C-I20

RF X-TREME™ 4-port Antenna, 2.0m, 698-960 / 698-960 MHz, 65deg, 16.5 / 16.5 dBi, VET, 0-10°/0-10°



Dimensions: mm (in)



This drawing is a general representation of the antenna - it does NOT accurately depict the connectors or radome shape.



External Document Links

[APM40_Series_Installation_Instructions](#)

Notes

- All electrical parameters are compliant with BASTA NGMN 11.1 requirements.
- For additional mounting information please click ""External Document Links"".
- Radiating patterns: [Request pattern files](#)



PRODUCT DATASHEET

APXVBB20X3_43-C-I20

RF X-TREME™ 4-port Antenna, 2.0m, 698-960 / 698-960 MHz, 65deg, 16.5 / 16.5 dBi, VET, 0-10°/0-10°

