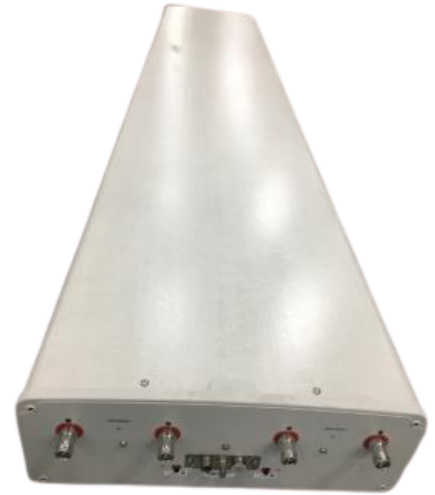




FEATURES / BENEFITS

- 4 ports / 2 cross pol system in low band (698-960MHz)
- Integrated and field replaceable SRET
- ACU HW Version -HRLS170901H1.00
- Compliant with AISG V2.0 and 3GPP



Technical features

ELECTRICAL SPECIFICATIONS

Electrical Specification Header		Low Band Array (698-960 MHz) [R1]		
Frequency Band	MHz	698-806	790-894	880-960
Gain Typical	dBi	16	16.6	16.7
Gain Over all Tilts	dBi	15.5 +/- 0.5	16.1 +/- 0.5	16.2 +/- 0.5
Azimuth Beamwidth 3dB	Deg	67.2 +/- 3	65 +/- 4	63.8 +/- 5.5
Elevation Beamwidth 3dB	Deg	8.8 +/- 0.5	7.9 +/- 0.5	7.1 +/- 0.2
Cross Polar Discrimination at Boresight	dB	19	19	22
Cross Polar Discrimination over Sector	dB	14.4	11	10
F/B at +/-30deg Total Power	dB	22.4	22	22
First Upper Side Lobe Suppression	dB	17	19	23
Electrical Downtilt	Deg	0 to 10		
Cross Polar Isolation	dB	27		
Interband Isolation	dB	27		
VSWR	-	1.5		
Passive Intermodulation (3rd Order, 2 x 43dBm)	dBc	-153		
Maximum Effective Power per Port	Watt	250		



ELECTRICAL SPECIFICATIONS

Electrical Specification Header		Low Band Array (698-960 MHz) [R2]		
Frequency Band	MHz	698-806	790-894	880-960
Gain Typical	dBi	16.1	16.6	16.9
Gain Over all Tilts	dBi	15.6 +/- 0.5	16.1 +/- 0.5	16.4 +/- 0.5
Azimuth Beamwidth 3dB	Deg	66.6 +/- 3.5	63.7 +/- 4.2	62.1 +/- 4.5
Elevation Beamwidth 3dB	Deg	8.6 +/- 0.5	7.7 +/- 0.5	7 +/- 0.1
Cross Polar Discrimination at Boresight	dB	22	20.7	24
Cross Polar Discrimination over Sector	dB	14.2	11.8	9
F/B at +/-30deg Total Power	dB	23.4	23	22
First Upper Side Lobe Suppression	dB	16	18	21
Electrical Downtilt	Deg	0 to 10		
Cross Polar Isolation	dB	27		
Interband Isolation	dB	27		
VSWR	-	1.5		
Passive Intermodulation (3rd Order, 2 x 43dBm)	dBc	-153		
Maximum Effective Power per Port	Watt	250		

ELECTRICAL SPECIFICATIONS

Impedance	Ohm	50
Polarization	Deg	±45°

MECHANICAL SPECIFICATIONS

Dimensions - H x W x D	mm (in)	2498 x 468 x 168 (98.4 x 18.4 x 6.6)
Weight (Antenna Only)	kg (lb)	31.5 (69.4)
Weight (Mounting Hardware only)	kg (lb)	9 (19.8)
Packing size- HxWxD	mm (in)	2820 x 583 x 298 (111 x 23 x 11.7)
Shipping Weight	kg (lb)	39 (86)
Connector type		4 x 4.3-10 Female at bottom + 2 AISG connectors (1 male, 1 female)
Radome Material / Color		Fiberglass / Light Grey RAL7035

TESTING AND ENVIRONMENTAL

Temperature Range	°C (°F)	-40 to 60 (-40 to 140)
Lightning protection		Direct Ground
Survival/Rated Wind Velocity	km/h	200 (150)
Wind Load @Rated Wind Front	N	1207
Wind Load @Rated Wind Side	N	372
Wind Load @Rated Wind Rear	N	1533

ORDERING INFORMATION

Order No.	Configuration	Mounting Hardware	Mounting pipe Diameter	Shipping Weight
APXVBB26H_43-C-I20	Internal RET(ACU-I20-H12A)	APM50-HS	50 - 125mm	39 kg

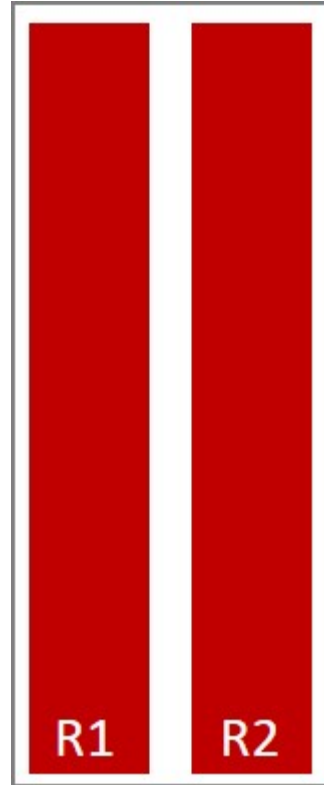
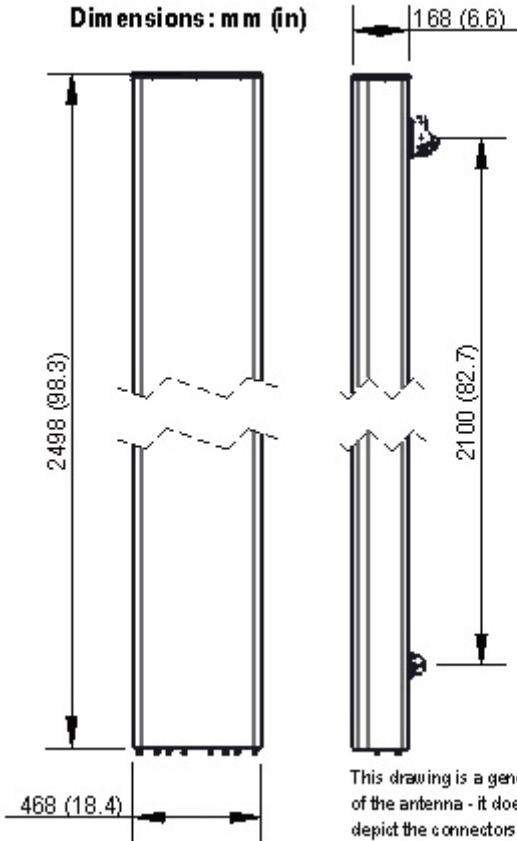


APXVBB26H_43-C-I20

4-Ports, X-Pol, Panel Antenna, 2.6m, 2x 698-960MHz, 65deg, Integrated RET



Dimensions: mm (in)



External Document Links

[APM50_Series_Installation_Instructions](#)

Notes

- All electrical parameters are compliant with BASTA NGMN 11.1 requirements.
- For additional mounting information please click "External Document Links".
- **Radiating patterns:** [Request pattern files](#)