



APXVBBL15H_43-C-I20

6-Ports, X-Pol, Panel Antenna, 1.5m, 2x 690-960/1x 1695-2690MHz, 65deg, Integrated RET

FEATURES / BENEFITS

- 4 ports / 2 cross pol systems in low band (690-960 MHz)
- 2 ports / 1 cross pol system in very wide high band (1695-2690 MHz)
- Integrated and field replaceable SRET
- ACU HW Version -HRLS170901H1.00 / SW Version -SRLS190802V1.22
- Compliant with AISG V2.0 and 3GPP



Technical features

ELECTRICAL SPECIFICATIONS

Electrical Specification Header		LOW BAND ARRAY (690-960 MHz) [R1]		
Frequency Band	MHz	690 - 806	790 - 894	880 - 960
Gain Typical	dBi	14.8	15.4	15.1
Gain Over all Tilts	dBi	13.8+/-1	14.9+/-0.5	15.0+/-0.1
Azimuth Beamwidth 3dB	Deg	65.7+/-4.3	60.1+/-4.5	58.2+/-9.3
Elevation Beamwidth 3dB	Deg	15.8+/-1	14.1+/-1	12.5+/-1
Cross Polar Discrimination at Boresight	dB	16	20	24
Cross Polar Discrimination over Sector	dB	9	9.6	10
F/B at +/-30deg Total Power	dB	19	21	22.7
First Upper Side Lobe Suppression	dB	17	19.5	18
Electrical Downtilt	Deg	2 to 12		
Cross Polar Isolation	dB	25		
Interband Isolation	dB	25		
VSWR	-	1.5		
Passive Intermodulation (3rd Order, 2 x 43dBm)	dBc	-153		
Maximum Effective Power per Port	Watt	250		



ELECTRICAL SPECIFICATIONS

Electrical Specification Header		LOW BAND ARRAY (690-960 MHz) [R2]		
Frequency Band	MHz	690 - 806	790 - 894	880 - 960
Gain Typical	dBi	14.7	14.4	15.0
Gain Over all Tilts	dBi	13.7+/-1	14.9+/-0.5	14.9+/-0.1
Azimuth Beamwidth 3dB	Deg	64+/-6	57.2+/-3.5	55.1+/-7.5
Elevation Beamwidth 3dB	Deg	15.7+/-1.5	13.8+/-1	12.5+/-1
Cross Polar Discrimination at Boresight	dB	16.8	20	23
Cross Polar Discrimination over Sector	dB	8.9	8.8	9
F/B at +/-30deg Total Power	dB	19.2	22	22.3
First Upper Side Lobe Suppression	dB	18.5	19.1	18
Electrical Downtilt	Deg	2 to 12		
Cross Polar Isolation	dB	25		
Interband Isolation	dB	25		
VSWR	-	1.5		
Passive Intermodulation (3rd Order, 2 x 43dBm)	dBc	-153		
Maximum Effective Power per Port	Watt	250		

ELECTRICAL SPECIFICATIONS

Electrical Specification Header		High Band Array (1695-2690 MHz) [Y1]				
Frequency Band	MHz	1695 - 1880	1850 - 1990	1920 - 2170	2300 - 2400	2490 - 2690
Gain Typical	dBi	16.1	17.0	17.9	18.2	18.2
Gain Over all Tilts	dBi	16+/-0.1	16.5+/-0.5	17.4+/-0.5	17.7+/-0.5	17.7+/-0.5
Azimuth Beamwidth 3dB	Deg	72.4+/-3.9	66+/-6.1	56.1+/-5.5	59.5+/-4.4	66.8+/-3
Elevation Beamwidth 3dB	Deg	6.6+/-0.5	6.1+/-0.5	5.7+/-0.5	5.0+/-0.1	4.9+/-0.2
Cross Polar Discrimination at Boresight	dB	25.4	24	23	20.7	15
Cross Polar Discrimination over Sector	dB	15	14.5	10.1	4	0.1
F/B at +/-30deg Total Power	dB	26.2	27.1	28	27.7	26.8
First Upper Side Lobe Suppression	dB	14	17.2	18	15.7	18.2
Electrical Downtilt	Deg	2 to 12				
Cross Polar Isolation	dB	26				
Interband Isolation	dB	28				
VSWR	-	1.5				
Passive Intermodulation (3rd Order, 2 x 43dBm)	dBc	-153				
Maximum Effective Power per Port	Watt	200				



APXVBBL15H_43-C-I20

6-Ports, X-Pol, Panel Antenna, 1.5m, 2x 690-960/1x 1695-2690MHz, 65deg, Integrated RET

ELECTRICAL SPECIFICATIONS

Impedance	Ohm	50
Polarization	Deg	±45°

MECHANICAL SPECIFICATIONS

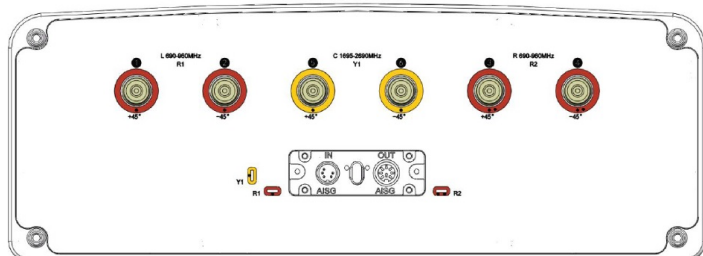
Dimensions - H x W x D	mm (in)	1498 x 468 x 168 (59 x 18.4 x 6.6)
Weight (Antenna Only)	kg (lb)	21 (46.3)
Weight (Mounting Hardware only)	kg (lb)	4.5 (9.9)
Packing size- HxWxD	mm (in)	1698 x 563 x 288 (66.9 x 22.2 x 11.3)
Shipping Weight	kg (lb)	28.5 (62.8)
Connector type		6 x 4.3-10 female/bottom + 2 AISG connectors (1 male, 1 female)
Radome Material / Color		Fiber Glass / Light Grey RAL7035

TESTING AND ENVIRONMENTAL

Temperature Range	°C (°F)	-40 to 60 (-40 to 140)
Lightning protection		Direct Ground
Survival/Rated Wind Velocity	km/h	200 (150)
Wind Load @Rated Wind Front	N	645
Wind Load @Rated Wind Side	N	285
Wind Load @Rated Wind Rear	N	720

ORDERING INFORMATION

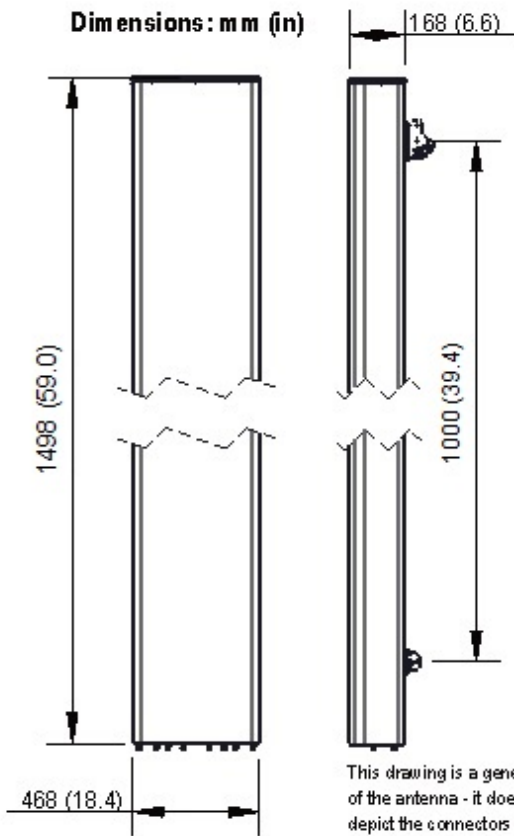
Order No.	Configuration	Mounting Hardware	Mounting pipe Diameter	Shipping Weight
APXVBBL15H_43-C-I20	Internal RET (ACU-I20-H12B)	APM50-H2	50-125mm	28.5 kg



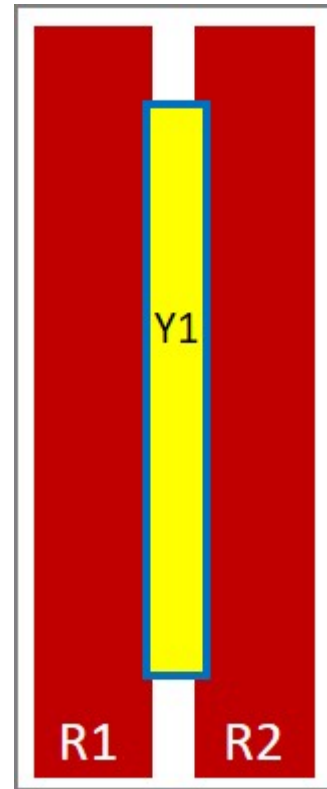


APXVBBL15H_43-C-I20

6-Ports, X-Pol, Panel Antenna, 1.5m, 2x 690-960/1x 1695-2690MHz, 65deg, Integrated RET



This drawing is a general representation of the antenna - it does NOT accurately depict the connectors or radome shape.



External Document Links

[APM50_Series_Installation_Instructions](#)

Notes

- All electrical parameters are compliant with BASTA NGMN 11.1 requirements.
- For additional mounting information please click "External Document Links".

• Radiating patterns: [Request pattern files](#)