



APXVRR14H-C-I20

4-Ports, X-Pol, Panel Antenna, 1.4m, 2x 1710-2170MHz, 65deg, Integrated RET

FEATURES / BENEFITS

- 4 ports / 2 cross pol systems in high band (1710-2170MHz)
- Integrated and field replaceable SRET
- ACU HW Version -HRLS170901H1.00
- Compliant with AISG V2.0 and 3GPP
- Common tilt for both array



Technical features

ELECTRICAL SPECIFICATIONS

Electrical Specification Header		High Band Array (1710-2170 MHz) [B1]		
Frequency Band	MHz	1710 - 1880	1850 - 1990	1920 - 2170
Gain Typical	dBi	17.1	17.6	17.7
Gain Over all Tilts	dBi	16.7 +/- 0.4	17.2 +/- 0.4	17.3 +/- 0.4
Azimuth Beamwidth 3dB	Deg	68 +/- 2.8	64.4 +/- 2	62.7 +/- 2.4
Elevation Beamwidth 3dB	Deg	7 +/- 0.4	6.5 +/- 0.2	6.2 +/- 0.3
Cross Polar Discrimination at Boresight	dB	27.5	26.4	26.3
Cross Polar Discrimination over Sector	dB	13.5	13	12.1
F/B at +/-30deg Total Power	dB	26.4	28.3	27.9
First Upper Side Lobe Suppression	dB	18	18.2	17.1
Electrical Downtilt	Deg	0 to 10		
Cross Polar Isolation	dB	28		
Interband Isolation	dB	28		
VSWR	-	1.5		
Passive Intermodulation (3rd Order, 2 x 43dBm)	dBc	-153		
Maximum Effective Power per Port	Watt	250		



ELECTRICAL SPECIFICATIONS

Electrical Specification Header		High Band Array (1710-2170 MHz) [B2]		
Frequency Band	MHz	1710 - 1880	1850 - 1990	1920 - 2170
Gain Typical	dBi	17.2	17.5	17.6
Gain Over all Tilts	dBi	16.7 +/- 0.5	17.2 +/- 0.3	17.2 +/- 0.4
Azimuth Beamwidth 3dB	Deg	67.9 +/- 2.8	64.4 +/- 1.8	62.9 +/- 2.4
Elevation Beamwidth 3dB	Deg	7 +/- 0.4	6.4 +/- 0.2	6.2 +/- 0.3
Cross Polar Discrimination at Boresight	dB	28	27.3	27.1
Cross Polar Discrimination over Sector	dB	12.7	11.7	10.2
F/B at +/-30deg Total Power	dB	25.8	26.6	26.6
First Upper Side Lobe Suppression	dB	18.3	18.5	18.3
Electrical Downtilt	Deg	0 to 10		
Cross Polar Isolation	dB	28		
Interband Isolation	dB	28		
VSWR	-	1.5		
Passive Intermodulation (3rd Order, 2 x 43dBm)	dBc	-153		
Maximum Effective Power per Port	Watt	250		

ELECTRICAL SPECIFICATIONS

Impedance	Ohm	50
Polarization	Deg	±45°

MECHANICAL SPECIFICATIONS

Dimensions - H x W x D	mm (in)	1378 x 258 x 88 (54.3 x 10.2 x 3.5)
Weight (Antenna Only)	kg (lb)	10 (22)
Weight (Mounting Hardware only)	kg (lb)	4 (8.8)
Packing size- HxWxD	mm (in)	1558 x 353 x 208 (61.3 x 13.9 x 8.2)
Shipping Weight	kg (lb)	14.8 (32.6)
Connector type		4 x 7/16 female/bottom + 2 AISG connectors (1 male, 1 female)
Radome Material / Color		Fiberglass / Light Grey RAL7035

TESTING AND ENVIRONMENTAL

Temperature Range	°C (°F)	-40 to 60 (-40 to 140)
Lightning protection		Direct Ground
Survival/Rated Wind Velocity	km/h	200 (150)
Wind Load @Rated Wind Front	N	415
Wind Load @Rated Wind Side	N	125
Wind Load @Rated Wind Rear	N	460

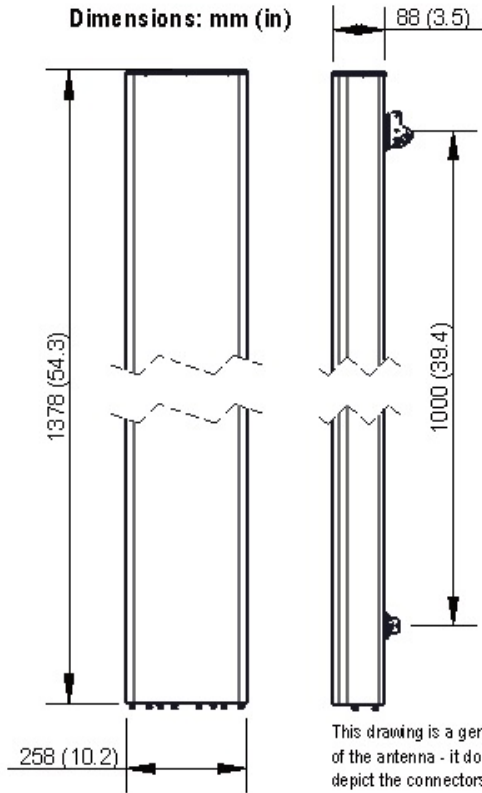
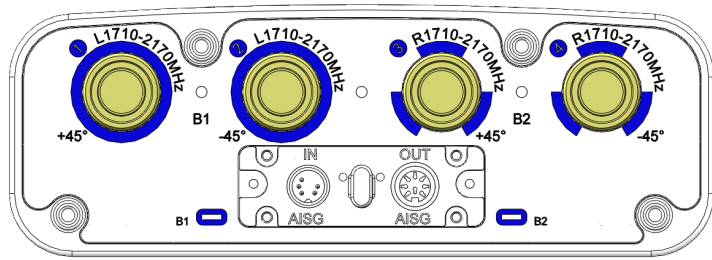
ORDERING INFORMATION

Order No.	Configuration	Mounting Hardware	Mounting pipe Diameter	Shipping Weight
APXVRR14H-C-I20	Internal RET(ACU-I20-H12A)	APM50-H1	50-125mm	14.8 Kg



APXVRR14H-C-I20

4-Ports, X-Pol, Panel Antenna, 1.4m, 2x 1710-2170MHz, 65deg, Integrated RET



External Document Links

[APM50_Series_Installation_Instructions](#)

Notes

- All electrical parameters are compliant with BASTA NGMN 11.1 requirements.
- For additional mounting information please click "External Document Links".
- **Radiating patterns:** [Request pattern files](#)