



**B260-250FP**

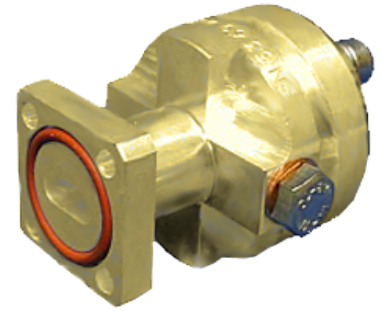
Connector for FLEXWELL® elliptical waveguide E250, PBR260 Flange

Standard connector for FLEXWELL® elliptical waveguide E250 with PBR260 flange, gasket with shrinking sleeve sealed  
frequency range: 24.25 - 26.5 GHz

**FEATURES / BENEFITS**

**Superior Design**

- Due to the precise manufacturing no tuning screws are necessary
- The terminations are brass passivated for good electrical performance
- A gas inlet is included



**Quick & Easy Installation**

- Different flaring tools are available
- No tuning in the field

**Technical features**

**STRUCTURE**

<b>Transmission Line Type</b>		Elliptical Waveguide
<b>Cable Type</b>		E250
<b>Model Series</b>		E250 Series
<b>Connector Frequency Range</b>	GHz	24.25 - 26.5
<b>Connector Type</b>		Fixed
<b>Sealing Method</b>		Gasket with Shrinking Sleeve
<b>Plating Outer/Inner</b>		Brass
<b>Waterproof Level</b>		IP68
<b>Gas Inlet</b>		M5 x 0.8
<b>Connector Interface</b>		PBR260

**MECHANICAL SPECIFICATIONS**

<b>Length</b>	mm (in)	38 (1.5)
<b>Outer Diameter</b>	mm (in)	32 (1.3)
<b>Weight</b>	kg (lb)	0.2 (0.44)

**External Document Links**

- [Installation Instruction](#)
- [Application Note](#)

**Notes**