



BD21*W* Dehydrator Series

BD21*W* Automatic Dehydrator, 110-125 VAC 50/60Hz or 208-253 VAC 50/60Hz

The dehydrator removes the moisture from damp ambient air to deliver a reliable, constant, ondemand source of dry and pressurised air, which is critical to prevent the systems from performance and reliability degradation by condensation. The BD210WLP series dehydrators offer pressurization solutions to transmission lines and antennas in both telecom and broadcasting applications. Its low pressure models (suffix LP) are suitable for applications where reduced pressure is required, for example, pressurisation of broadcast antenna radomes, microwave waveguides and other transmission lines. The inherent reliability of the BD series design, combined with the high output capacity and remote real-time data capabilities make these units an ideal choice for pressurisation of systems at unattended sites. The BD210WLP Series dehydrators employ a fully digital operating platform offering the most accurate readings of operating variables, either from the front panel or by a remote IP connection.



BD210WLP / BD212WLP

FEATURES / BENEFITS

- Air Delivery up to 236L/h
- Available in 110VAC, 220VAC and 48VDC (by an Optional Inverter) power supply
- Remote Real-time Data and Alarm Reset Capabilities
- SNMP Communication Compatible
- Digital Display of all Operating Parameters
- Compact & Lightweight
- Ultra Quiet Swing-Piston Compressor
- Versatile Mounting & Installation Options
- Operating pressure can be changed by a simple adjustment at the dehydrator
- Easy Slide Rail Mounting Kit Included (not with BD210WLP-V)
- Vertical Wall Mount Bracket Included with BD210WLP-V ONLY

Technical features

GENERAL SPECIFICATIONS

Product Type		Automatic Dehydrator	
Model		BD210WLP / BD210WLP-V	BD212WLP / BD212WLP-V
max. System Volume @Sea Level	l	1.993	
Output Capacity	l/h	236 @ 100% Duty Cycle	
Output Pressure	kPa (PSIG)	2.1 - 51.7 (0.3 - 7.5)	
Output Air Relative Humidity	%	>2 RH	
Number of Outlets		1	
Output Fitting		Single, 3/8" Press-to-Lock tube fitting	
Noise Level at 3m	dBA	48	
Network Management		via Web Browser or SNMP through RJ-45 Ethernet Connection	

ELECTRICAL SPECIFICATIONS

Operating Voltage	V	110 - 125 VAC, 50 / 60Hz Note: 1	208 - 253 VAC, 50 / 60Hz
Operating Current	A	1	0.5

MECHANICAL SPECIFICATIONS

Dimension H x D x W	cm	17.2 x 41.0 x 49.3	
Weight	Kg	19.0	

ENVIRONMENTAL

Ambient Temperature Range	°C	+5 to +30 Note: 2	
----------------------------------	----	-------------------	--



BD21*W* Dehydrator Series

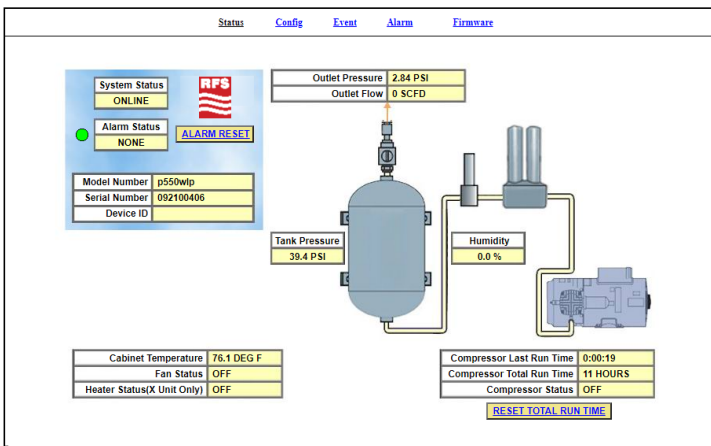
BD21*W* Automatic Dehydrator, 110-125 VAC 50/60Hz or 208-253 VAC 50/60Hz

ALARMS

Alarm	<p>Standard Alarm - Complete readings of all critical measurement points, individual alarm indication display, including SNMP communication.</p> <ul style="list-style-type: none"> High Outlet Pressure Alarm Low Outlet Pressure Alarm High Humidity Alarm High Flow Rate Alarm High Cabinet Temperature Alarm High Compressor Last Run Time Alarm
--------------	--

ACCESSORIES

Model Name	Description
P017612	12-Month Maintenance Kit for BD21*W* Series
P017703	Universal Rack Mounting Kit for BD21*W* Series
P017460	Wall Mounting Kit for BD21*W* Series
GLK-1	Start up Kit for Dehydrator
PWM2G	2-Port Manifold with Pressure Gauges
PWM2GC	2-Port Manifold with Pressure Gauges & Valves
MLK-2	Start up Kit for 2-Port Manifold
PW4MG	4-Port Manifold with Pressure Gauges
PW4MGC	4-Port Manifold with Pressure Gauges & Valves
MLK-4	Start up Kit for 4-Port Manifold
PWM8G	8-Port Manifold with Pressure Gauges
P8WMGC	8-Port Manifold with Pressure Gauges & Valves
MLK-8	Start up Kit for 8-Port Manifold
TUBE-38OD-PON	Gas inlet adaptor 1/8" NPT for 3/8" OD tube
TUBE-M12-G18	Gas inlet Adapter M12x1.5 - G1/8



Screen image showing remote display of dehydrator status and alarms



BD21*W* Dehydrator Series

BD21*W* Automatic Dehydrator, 110-125 VAC 50/60Hz or 208-253 VAC 50/60Hz



BD210WLP-V / BD212WLP-V

External Document Links

[Dehydrator Sizing Reference Guide](#)

Notes

Note 1: (15 Amp service recommended)

Note 2: Unit will go into SHUTDOWN mode if cabinet temperature exceeds 49°C