



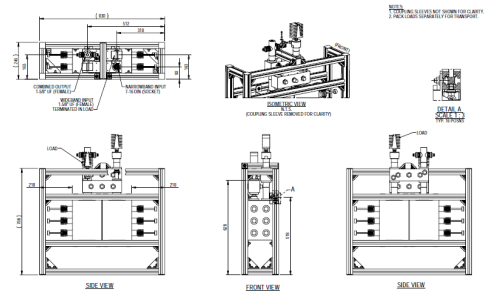
The CA6PPXX80E combiner is designed for DTV mask and combining applications. A module comprises a pair of 6 pole 80mm UHF filters and a pair of 3 dB couplers in a balanced combiner configuration.

FEATURES / BENEFITS

Each combiner module features

- Compact size
- Low insertion loss
- Adjacent channel operation
- DTV mask filtering
- Double compensated invar temperature stability

Detailed electrical specifications and further information is available by opening the appropriate external document link below.



Typical CA6PPXX80E Combiner

Technical features

STRUCTURE

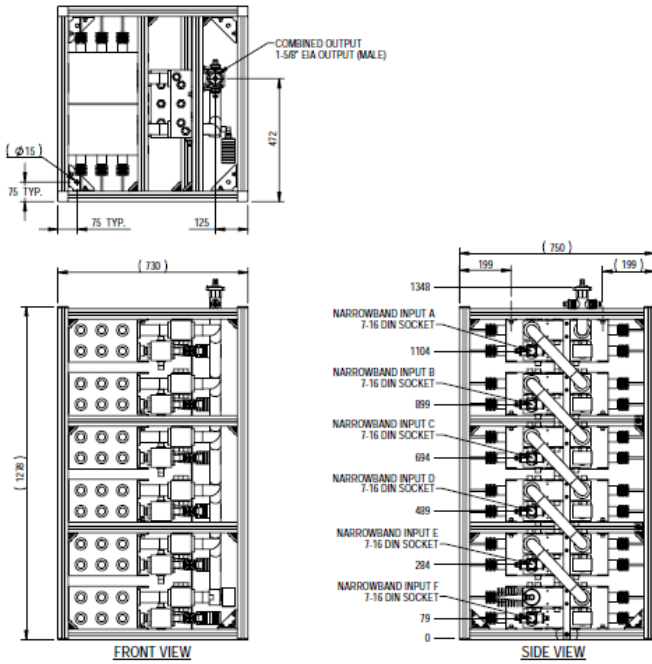
Product Line		Combiner TV
Product Type		Band IV/V (UHF) TV Balanced Combiner
Filter Type and Size		Cross coupled

ELECTRICAL SPECIFICATIONS

Frequency Range	MHz	470 - 862
Minimum Channel Spacing		adjacent
Narrowband Input Power	kW	1
Number of Poles		6
Number of Cross Couplings		2
3 dB Channel Bandwidth	MHz	6 to 8
Mask		ATSC 3 FCC, ISDB-T Critical, ETSI 8MHz Non-critical

TEMPERATURE SPECIFICATIONS

Freq Drift - Tx Operation	kHz/°C(°F)	<2 (1.2)
Freq Drift - Ambient Temperature	kHz/°C(°F)	<2 (1.2)



6 channel frame mounted combiner

External Document Links

[Combiner Application Guide ETSI DVB-T and T2 8MHz](#)

[Combiner Application Guide \(ATSC 6MHz\)](#)

[Combiner Application Guide \(ISDB-T 6MHz\)](#)

Notes

Detailed electrical specifications and further information is available by opening the appropriate external document links.