



Standard connector for FLEXWELL® elliptical waveguide E105 with PDR100 flange, gasket with shrinking sleeve sealed  
frequency range: 10.0 - 11.7 GHz

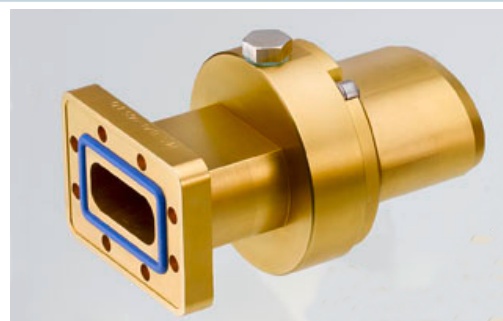
**FEATURES / BENEFITS**

**Superior Design**

- Due to the precise manufacturing no tuning screws are necessary
- The terminations are brass passivated for good electrical performance
- A gas inlet is included

**Quick & Easy Installation**

- Different flaring tools are available
- No tuning in the field



**Technical features**

**STRUCTURE**

<b>Transmission Line Type</b>		Elliptical Waveguide
<b>Cable Type</b>		E105
<b>Model Series</b>		E105 Series
<b>Connector Frequency Range</b>	GHz	10 - 11.7
<b>Connector Type</b>		Fixed
<b>Sealing Method</b>		Gasket
<b>Plating Outer/Inner</b>		Brass
<b>Waterproof Level</b>		IP68
<b>Gas Inlet</b>		G 1/8
<b>Connector Interface</b>		PDR100

**MECHANICAL SPECIFICATIONS**

<b>Length</b>	mm (in)	104 (4.1)
<b>Outer Diameter</b>	mm (in)	54 (2.1)
<b>Weight</b>	kg (lb)	0.6 (1.32)

**External Document Links**

[Installation Instruction](#)  
1000009163-01\_Application Note\_Installation of Heat Shrink Sleeves for additional sealing of Connectors.pdf

**Notes**