



FDBL5003D4-S2

ShareLite™ 380-960 / 1695-2700 MHz Diplexer, with Auto DC/AISG Sense, Dual configuration, 4.3-10 Connectors

The Sharelite FDBL Series of diplexers are designed to enable feeder sharing between systems in the 380-960 MHz range and in the 1695-2700 MHz range. RFS's innovative cavity filter design provides a very low insertion loss of 0.1dB typical while keeping the product extremely compact and lightweight. The usage of highly selective filters also guarantees a high isolation level of 50dB between ports, to ensure an interference-free environment for any technology deployed. The filter design also comprises of lightning protection for additional reliability. Designed to withstand the most severe outdoor environments, it also features an IP67 class protection with a vented enclosure to avoid any possible effects of condensation and pressure instability, thus providing a long lasting, extremely reliable solution to any network.

FEATURES / BENEFITS

- Dual unit for use with X-pol Antennas
- Auto DC sense to prevent installation mistakes and eliminate the need for DC stops
- 4.3-10 Connectors - Reduce tower loading with connectors that are 40% smaller and lighter than 7-16 DIN connectors
- Extremely Low Insertion Loss
- High level of Rejection between bands - Protection against interference
- Extremely High Power Handling Capability
- Very compact & small size design - Easy installation and reduced tower load
- Exceptional reliability & environmental protection (IP-67)
- Mounting hardware for Wall and Pole mount provided (P/N SEM2-1A)
- Grounding already provided through the mounting bracket



Technical features

GENERAL SPECIFICATIONS

Product Type		Diplexer/Cross Band Combiner
Application		LTE600, LTE700, Cellular 800, GSM900, GSM1800, LTE1800, UMTS, LTE2100, AWS1, AWS3, AWS4 (U), PCS, LTE2300, LTE2600, WCS, BRS
Configuration		Dual indoor/outdoor

ELECTRICAL SPECIFICATIONS

Branch		1, 2
Frequency Range	MHz	380-960 1695-2700
Impedance	Ohms	50, 50
Frequency Band		LTE600, LTE700, Cellular 800, GSM900,, GSM1800, LTE1800, UMTS, LTE2100, AWS1, AWS3, AWS4 (U), PCS, LTE2300, LTE2600, WCS, BRS
DC Pass		Auto DC Sense
Insertion Loss	dB	0.1 typ./ 0.2 max , 0.1 typ./ 0.2 max
Group Delay Variation	ns	0.5, 1
GROUPDELAYNS	ns	2.5 max., 3.0 max.
Total Group Delay	ns	2.5 max., 3.0 max.
Return Loss	dB	22 typ., 22 typ.
Power Handling Continuous, Max.	W	600 at common port, 300 on each path
Input Power, PEP	W	3000
Rejection between bands	dB	50
3rd Order PIM	dBm (dBc)	-118 (-161) @2x43 typ.



FDBL5003D4-S2

ShareLite™ 380-960 / 1695-2700 MHz Diplexer, with Auto DC/AISG Sense, Dual configuration, 4.3-10 Connectors

TESTING AND ENVIRONMENTAL

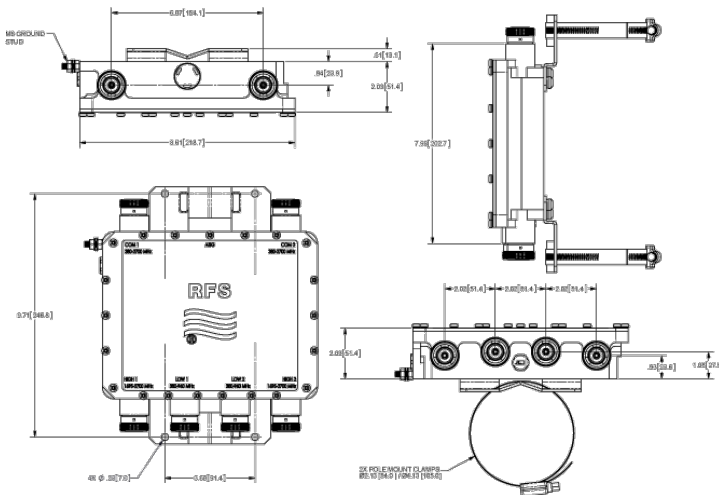
Temperature Range	°C (°F)	-40 to 65 (-40 to 149)
Ingress Protection		IP 67
Environmental		ETSI 300-019-2-4 Class 4.1E
Lightning Protection		EN/IEC61000-4-5 Level 4

MECHANICAL SPECIFICATIONS

RF Connectors		4.3-10 Female; 4 ports in, 2 ports out
Weight	kg (lb)	3.5 (7.7)
Shipping Weight	kg (lb)	3.5 (7.7)
Dimensions, H x W x D	mm (in)	172x 220 x 56 (6.7 x 8.7 x 2.1)
Shipping Dimensions, H x W x D	mm (in)	172x 220 x 56 (6.7 x 8.7 x 2.1)
Mounting		Wall Mounting: With 4 screws (maximum 6mm diameter) Pole Mounting: With included clamp set 40-110mm (1.57-4.33")

SELECTION TABLE

Type	Model Number	No DC Pass	DC Pass High Band	DC Pass Low Band	Full DC Pass	DC Sense priority
Dual	FDBL5003D4-S2					380-960
Dual	FDBL5003D4-S2A					380-960 with AISG
Dual	FDBL5003D4-1C				X	
Dual	FDBL5003D4-2C			X		
Dual	FDBL5003D4-3C		X			
Dual	FDBL5003D4-NC	X				



External Document Links

- [RFS Diplexer Field Test Procedure](#)
- [FDBL5003D4-S_Installation_Rev0.pdf](#)

Notes