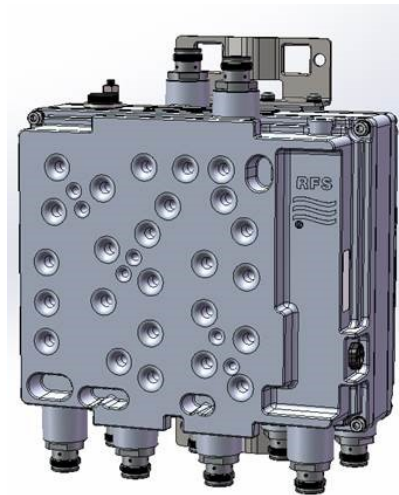




FQBDWM5020D4-1C

ShareLite™ 380-960/1427-1880/1920-2200/2300-2690 MHz Quadplexer with Full DC/AISG pass, Dual configuration, 4.3-10 Connectors

The Sharelite FQBDWM Series of quadplexers is designed to enable feeder sharing among systems in the 380-960, 1427-1880, 1920-2200, and 2300-2690 MHz ranges. RFS' innovative cavity filter design provides a very low insertion loss of 0.3dB typical while keeping the product extremely compact and lightweight. The use of highly selective filters guarantees a high isolation level of 50 dB between ports, to ensure an interference-free environment for any technology deployed. The filter design incorporates lightning protection for additional reliability. Designed to withstand the most severe outdoor environments, the quadplexer features an IP67 class protection with a vented enclosure to avoid any possible effects of pressure instability, thus providing a long lasting, extremely reliable solution to any network.



FEATURES / BENEFITS

- Dual unit for use with X-pol Antennas
- Full DC pass
- 4.3-10 Connectors - Reduce tower loading with connectors that are 40% smaller and lighter than 7-16 DIN connectors
- Extremely Low Insertion Loss
- High level of Rejection between bands - Protection against interference
- Extremely High Power Handling Capability
- Very compact & small size design - Easy installation and reduced tower load
- Exceptional reliability & environmental protection (IP-67)
- Mounting hardware for Wall and Pole mount provided (P/N SEM2-1A)
- Grounding already provided through the mounting bracket

Technical features

GENERAL SPECIFICATIONS

Product Type		Quadplexer / Cross Band Combiner			
Application		LTE700, LTE800, GSM900, 1500 L Band (LTE Band 32), GSM1800, LTE1800, UMTS, LTE2100, LTE2300, WCS, BRS, LTE2600			
Configuration		Dual Indoor/Outdoor			

ELECTRICAL SPECIFICATIONS

Branch		1, 2, 3, 4			
Frequency Range	MHz	380-960	1427-1880	1920-2200	2300-2690
Impedance	Ohms	50, 50, 50, 50			
Frequency Band		LTE700, LTE800, GSM900, 1500 L Band (LTE Band 32), GSM1800, LTE1800, UMTS, LTE2100, LTE2300, WCS, BRS, LTE2600			
DC Pass		Full DC pass			
Insertion Loss	dB	.30 max., .40 max., .40 max., .30 max.			
GROUP DELAYS	ns	5 max, 25 max, 25 max, 15 max			
Total Group Delay	ns	5 max, 25 max, 25 max, 15 max			
Return Loss	dB	19min. / 22typ., 19min. / 22typ., 19min. / 22typ., 19min. / 22typ.			
Power Handling Continuous, Max.	W	1200 at common port, 300 on each path			
Input Power, PEP	W	3000			
Rejection between bands	dB	50			
3rd Order PIM	dBm (dBc)	-118 (-161) @2x43 typ.			

**FQBDWM5020D4-1C**

ShareLite™ 380-960/1427-1880/1920-2200/2300-2690 MHz Quadplexer with Full DC/AISG pass, Dual configuration, 4.3-10 Connectors

TESTING AND ENVIRONMENTAL

Temperature Range	°C (°F)	-40 to 65 (-40 to 149)
Ingress Protection		IP67
Environmental		ETSI 300-019-2-4 Class 4.1E
Lightning Protection		EN/IEC 61000-4-5 Level 4

MECHANICAL SPECIFICATIONS

RF Connectors		4.3-10 Female; 8 ports in, 2 ports out
Shipping Weight	kg (lb)	6.8 (15)
Dimensions, H x W x D	mm (in)	200 x 235 x 108 (7.9 x 9.3 x 4.2)
Shipping Dimensions, H x W x D	mm (in)	200 x 235 x 108 (7.9 x 9.3 x 4.2)
Mounting		Wall mounting: with 4 screws (maximum 6mm diameter), not included Pole Mounting: with included clamp set, 38-127mm (1.5"-5.0")

[External Document Links](#)[Notes](#)