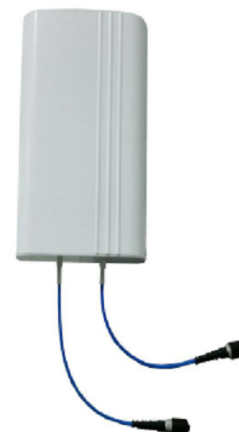




The panel antenna I-ATP5-43-698/4000M is designed for broadband in-building DAS applications supporting all kind of safety as well as 4G and 5G commercial wireless communication networks. The antenna combines an aesthetical design with superior electrical characteristics notably a PIM optimized design to minimize network interferences. The antenna is constructed from lightweight materials ideal for easy ceiling mounting. The low profile and off-white radome blends easily into most building aesthetics with minimum visual impact.

**FEATURES / BENEFITS**

- Wideband panel antenna supporting the frequency bands 698-960/1710-2700 / 3400-4000MHz
- Typically used in indoor distribution of 2G/3G/4G/5G wireless services in all standardized frequency bands
- Low return loss, High gain, Stable performance.
- PIM optimized antenna design (-153dBc @2x20W)
- Aesthetical visual appearance, compact and light weight
- Pigtail with 4.3-10 female connector
- Ideal for 4G LTE multi-band MIMO applications



I-ATP5-43-698/4000M

**Technical features**

**GENERAL SPECIFICATIONS**

Product Type		Panel Antenna
Techn. Application		Indoor

**MECHANICAL SPECIFICATIONS**

Number of Input Ports		2
Connectors		4.3-10 female
Mounting Hardware included		Wall bracket, screws
Height (Less Connectors)	mm (in)	62 (2.44)
Diameter (Less Connectors)	mm (in)	4.3 ()
Width (Less Connectors)	mm (in)	180 (7.1)
Length (Less Connectors)	mm (in)	403 (15.9)
Weight	kg (lb)	1.5 (3.3)

**ELECTRICAL SPECIFICATIONS**

Frequency	MHz	698 - 806	806 - 960	1710 - 2170	2200 - 2700	3400 - 4000
Gain, typ.	dBi	5.0	6.0	7.0	7.5	8.5
max. VSWR		2.0	2.0	2.0	2.0	2.0
Beam width, Vertical, typ.	°	73	70	60	60	30
Beam width, Horizontal, typ.	°	80	80	65	60	55
Impedance, Ohm	Ω	50				
Polarization		Vertical and horizontal				
Intermodulation (IM3)		- 153dBc with 2 x 20W				
Total Input Power max.	W	50				

**MATERIAL**

Radome Material		ABS
Radome Color		White (RAL 9003)

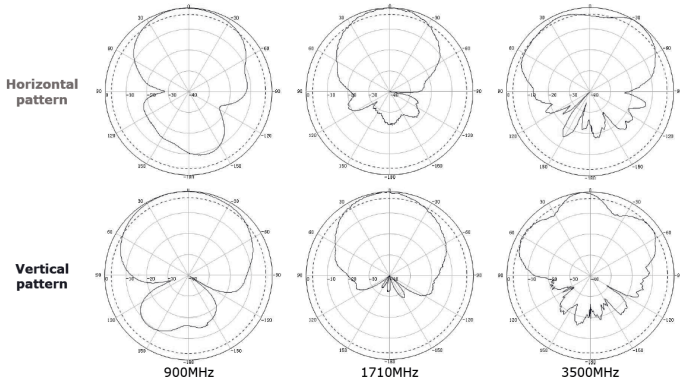
**TEMPERATURE SPECIFICATIONS**

Operation Temperature	°C (°F)	-40 to 55 (-40 to 131 )
-----------------------	---------	-------------------------



**TESTING AND ENVIRONMENTAL**

<b>Environmental Class</b>		Indoor
----------------------------	--	--------



External Document Links

Notes