



P-BBLLYYZ06-01

Antenna Panel Cross Polarized 14 Port Antenna, 694-960/694-960/1695-2690/1695-2690/3300-4200/3300-4200/5150-5925MHz, 65deg, 7.5/7.3/14.0/14.0/10.6/10.5/5.4 dBi, 0.6m (2ft), Fixed Electrical TO

FEATURES / BENEFITS

This antenna provides a 14 port 65-degree platform for advanced use in encompassing low band 700MHz and 800MHz deployment scenarios and high band AWS, PCS, BRS, CBRS, C-Band and LAA in a high quality package design built to withstand harsh environments.

- Expanded 3.3 - 4.2 GHz range to cover CBRS & full C-BAND
- 4x4 MIMO on 700/800/900/AWS/PCS/BRS/CBRS/C-BAND
- 2X2 MIMO on LAA
- Quick and Easy Installation



Technical features

ELECTRICAL SPECIFICATIONS

Electrical Specification Header		LOW BAND BOTTOM ARRAY (694-960 MHz) [R1]		
Frequency Range	MHz	694-806	806-894	880-960
Gain Typical	dBi	7.5	7.4	7.0
Gain Over All Tilts	dBi	6.8+/-0.7	7+/-0.4	6.4+/-0.6
Horizontal Beamwidth	deg	80+/-5.8	76.9+/-4.1	88.5+/-12.9
Vertical Beamwidth	deg	90.6+/-14.1	73.4+/-2.8	75.6+/-9
Electrical Downtilt		deg		
Cross Polar Isolation	dB	25		
Cross Polar at 60 deg	dB	2.6	3.6	7.5
VSWR		1.5:1		
3rd Order IMP 2 x 43dBm	dB	- 153		
Maximum Power Input	Watts	50		

ELECTRICAL SPECIFICATIONS

Electrical Specification Header		LOW BAND TOP ARRAY (694-960 MHz) [R2]		
Frequency Range	MHz	694-806	806-894	880-960
Gain Typical	dBi	6.6	7.0	7.3
Gain Over All Tilts	dBi	6.3+/-0.3	6.6+/-0.4	6.2+/-1.1
Horizontal Beamwidth	deg	83+/-2.7	80.7+/-7.8	86.1+/-22.9
Vertical Beamwidth	deg	96.7+/-5.4	81.9+/-6.2	86.5+/-8.6
Electrical Downtilt		deg		
Cross Polar Isolation	dB	25		
Cross Polar at 60 deg	dB	0.6	1.1	4
VSWR		1.5:1		
3rd Order IMP 2 x 43dBm	dB	- 153		
Maximum Power Input	Watts	50		



P-BBLLYYZ06-01

Antenna Panel Cross Polarized 14 Port Antenna, 694-960/694-960/1695-2690/1695-2690/3300-4200/3300-4200/5150-5925MHz, 65deg, 7.5/7.3/14.0/14.0/10.6/10.5/5.4 dBi, 0.6m (2ft), Fixed Electrical TO

ELECTRICAL SPECIFICATIONS

Electrical Specification Header		MID BAND LEFT ARRAY (1695-2690 MHZ) [Y1]				
Frequency Range	MHz	1695-1880	1850-1990	1920-2200	2300-2496	2496-2690
Gain Typical	dBi	12.4	12.9	13.2	13.2	14.0
Gain Over All Tilts	dBi	11.9+/-0.5	12.4+/-0.5	12.8+/-0.4	13+/-0.2	13.7+/-0.3
Horizontal Beamwidth	deg	73.8+/-1.9	71.6+/-3.2	66.9+/-4.3	72.3+/-6.4	58.4+/-7.6
Vertical Beamwidth	deg	20.0+/-1.2	18.9+/-0.6	17.2+/-1.1	15.1+/-0.7	13.5+/-0.5
Electrical Downtilt		deg				
Cross Polar Isolation	dB	25				
Cross Polar at 60 deg	dB	12.6	13.4	11.5	3.5	9.7
VSWR		1.5:1				
3rd Order IMP 2 x 43dBm	dB	- 153				
Maximum Power Input	Watts	50				

ELECTRICAL SPECIFICATIONS

Electrical Specification Header		MID BAND RIGHT ARRAY (1695-2690 MHZ) [Y2]				
Frequency Range	MHz	1695-1880	1850-1990	1920-2200	2300-2496	2496-2690
Gain Typical	dBi	12.2	12.6	13.3	13.4	14.0
Gain Over All Tilts	dBi	11.8+/-0.4	12.3+/-0.3	12.8+/-0.5	13.2+/-0.2	13.7+/-0.3
Horizontal Beamwidth	deg	77.4+/-3.4	73.1+/-3.4	68.2+/-4.4	67.8+/-4	61.6+/-6.7
Vertical Beamwidth	deg	20.2+/-0.7	19.2+/-0.9	17.2+/-1.4	14.9+/-0.5	13.8+/-1
Electrical Downtilt		deg				
Cross Polar Isolation	dB	25				
Cross Polar at 60 deg	dB	13.1	12.0	11.6	7.1	11.0
VSWR		1.5:1				
3rd Order IMP 2 x 43dBm	dB	- 153				
Maximum Power Input	Watts	50				

ELECTRICAL SPECIFICATIONS

Electrical Specification Header		HIGH BAND LEFT ARRAY (3300-4200) [P1]			
Frequency Range	MHz	3300-3400	3400-3700	3700-4000	4000-4200
Gain Typical	dBi	10.6	10.3	10.4	10.4
Gain Over All Tilts	dBi	10.2+/-0.4	9.9+/-0.4	9.9 +/- .5	10.1+/-0.3
Max Gain	dBi	10.7	10.3	10.4	10.5
Min Gain	dBi	9.7	9.2	8.9	9.5
Horizontal Beamwidth	deg	71.1+/-6.3	67.8+/-9.1	57.9+/-4.8	59.5+/-1.8
Vertical Beamwidth	deg	33.8+/-2.1	31.8+/-3.4	25.8+/-2.1	25.2+/-2.6
Electrical Downtilt		deg			
Cross Polar Isolation	dB	25			
Cross Polar at 60 deg	dB	6.7	5	0.3	0.6
VSWR		1.5:1	1.4:1	1.5:1	1.5:1
3rd Order IMP 2 x 43dBm	dBc	/	-153	/	/
Maximum Power Input	Watts	50			



ELECTRICAL SPECIFICATIONS

Electrical Specification Header		HIGH BAND RIGHT ARRAY (3300-4200) [P2]			
Frequency Range	MHz	3300-3400	3400-3700	3700-4000	4000-4200
Gain Typical	dBi	10.5	10.3	10.2	10.5
Gain Over All Tilts	dBi	10.2+/-0.3	9.8 +/- .5	9.7+/-0.5	10.1+/-0.4
Max Gain	dBi	10.5	10.3	10.4	10.6
Min Gain	dBi	9.8	9.2	9	9.5
Horizontal Beamwidth	deg	69.5+/-4.1	69.3+/-4.8	61.3+/-10.7	58.4+/-4.8
Vertical Beamwidth	deg	33.5+/-2.9	31.6+/-2.9	26.5+/-2	24.9+/-2.4
Electrical Downtilt		deg			
Cross Polar Isolation	dB	25			
Cross Polar at 60 deg	dB	5.4	4.1	2	1.2
VSWR		1.5:1	1.4:1	1.5:1	1.5:1
3rd Order IMP 2 x 43dBm	dBc	/	-153	/	/
Maximum Power Input	Watts	50			

ELECTRICAL SPECIFICATIONS

Electrical Specification Header		HIGH BAND ARRAY (5150-5925) [O1]			
Frequency Range	MHz	5150-5925			
Gain Typical	dBi	5.4			
Gain Over All Tilts	dBi	4.9+/-0.5			
Horizontal Beamwidth	deg	69.2+/-12.8			
Vertical Beamwidth	deg	25+/-6.4			
Electrical Downtilt		deg			
Cross Polar Isolation	dB	25			
Cross Polar at 60 deg	dB	3.1			
VSWR		1.4:1			
3rd Order IMP 2 x 43dBm	dB	/			
Maximum Power Input	Watts	5			

ELECTRICAL SPECIFICATIONS

Electrical Specification Header		5 GHz FCC Power Requirements			
U-NII Band	-	U-NII 1	U-NII 2A	U-NII 2C	U-NII 3
Frequency	MHz	5150-5250	5250-5350	5470-5725	5725-5850
Max Input power per port to align with FCC Title 47 Part 15	Watts	0.5	0.125	0.125	0.5

ELECTRICAL SPECIFICATIONS

Impedance	Ohm	50			
Polarization	Deg	±45°			



P-BBLLYYZ06-01

Antenna Panel Cross Polarized 14 Port Antenna, 694-960/694-960/1695-2690/1695-2690/3300-4200/3300-4200/5150-5925MHz, 65deg, 7.5/7.3/14.0/14.0/10.6/10.5/5.4 dBi, 0.6m (2ft), Fixed Electrical TO

MECHANICAL SPECIFICATIONS

Dimensions - H x W x D	mm (in)	609 x 340 x 200 (24 x 13.4 x 7.9)
Weight (Antenna Only)	kg (lb)	7 (15.4)
Weight (Mounting Hardware only)	kg (lb)	4.2 (9.3)
Packing size- HxWxD	mm (in)	710 x 420 x 385 (28 x 16.5 x 15.2)
Shipping Weight	kg (lb)	13.4 (29.5)
Connector type		14 x 4.3-10 Long Neck Female/Bottom
Radome Material / Color		ASA / Light Grey RAL7035

TESTING AND ENVIRONMENTAL

Temperature Range	°C (°F)	-40 to 60 (-40 to 140)
Lightning protection		Direct Ground
Survival/Rated Wind Velocity	km/h	240 (160)
Wind Load @Rated Wind Front	N	234
Wind Load @Rated Wind Side	N	151
Wind Load @Rated Wind Rear	N	253

ORDERING INFORMATION

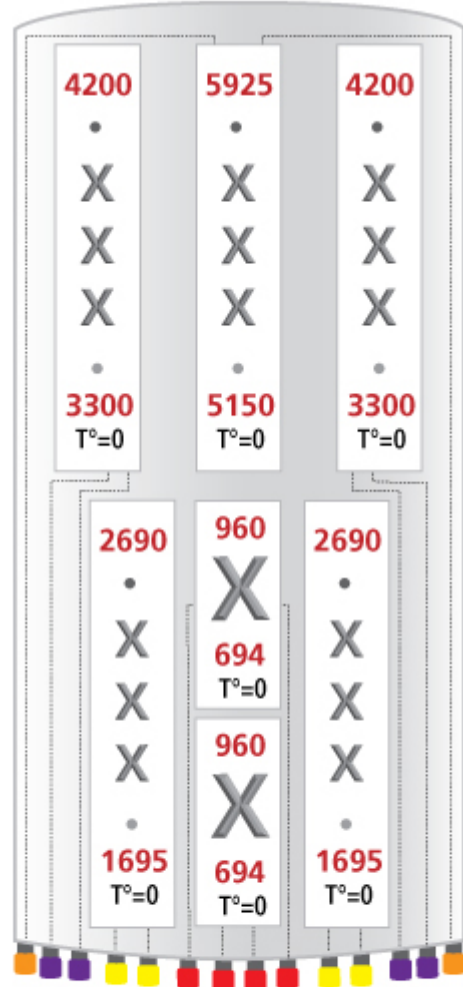
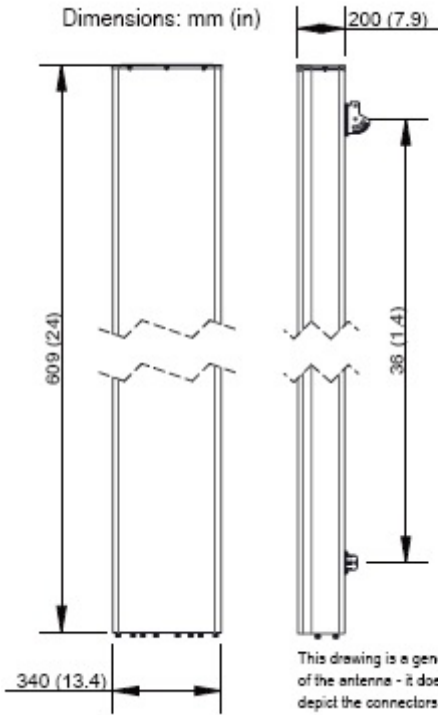
Model Number	Configuration	Mounting Hardware	Mounting pipe Diameter	Shipping Weight
P-BBLLYYZ06-01	Fixed Tilt Panel	APM40-6C	50-120mm (2-4.72 in)	13.4 kg (29.5lbs)





P-BLLYYZ06-01

Antenna Panel Cross Polarized 14 Port Antenna, 694-960/694-960/1695-2690/1695-2690/3300-4200/3300-4200/5150-5925MHz, 65deg, 7.5/7.3/14.0/14.0/10.6/10.5/5.4 dBi, 0.6m (2ft), Fixed Electrical TO



External Document Links
[APM40_Series_Installation_Instructions](#)

- Notes
- All electrical parameters are compliant with BASTA NGMN 11.1 requirements.
 - For additional mounting information please click ""External Document Links"".
 - Radiating patterns: [Request pattern files](#)