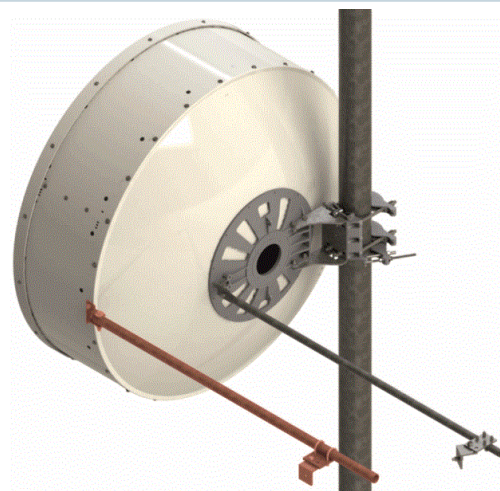




The perimeter sway bar reduces vibration of the reflector and increases stability of the antenna in worst case conditions.

The perimeter sway bar has no impact to the nominal survival wind speed performance of the antenna.

FEATURES / BENEFITS



Technical features

MECHANICAL PROPERTIES

| | | |
|------------------------|---------|-------------|
| Diameter | m (ft) | |
| Weight | kg (lb) | 4.7 (10.4) |
| Sway bar length | m (ft) | 1.35 (4.43) |
| SWAYBARDIAMETER | mm (in) | 33 (1.3) |

STRUCTURE

| | | |
|---------------------|--|--------------------------|
| Product Type | | Reinforcement Hardware |
| Kit Type | | Perimeter Sway Bar |
| Material | | Hot-dip galvanised steel |

External Document Links

[Sway bar installation kit \(click here\)](#)

Notes

The perimeter sway bar includes only the red marked parts and fixing hardware.

Only applicable for :

- SB4 and SBX4 antennas.
- SU4 all freq / SUX4+UXA4 antennas, in frequency 10GHz or above.

Not applicable for :

- SUX4/UXA4 antennas, in frequency below 10GHz.

The perimeter sway bar includes only the red marked parts and fixing hardware.

Only applicable for :

- SB4 and SBX4 antennas.
- SU4 all freq / SUX4+UXA4 antennas, in frequency 10GHz or above.

Not applicable for :

- SUX4/UXA4 antennas, in frequency below 10GHz.