

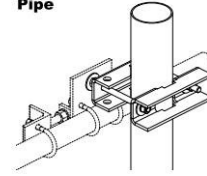


This connecting kit allows to attach the sway bar on any kind of support (pipes or L-sections) without needing to drill holes in the structure.

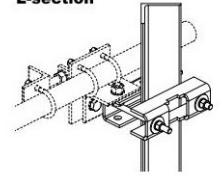
FEATURES / BENEFITS

- The RFS universal fixation kit SMA-SKO-UNIVERSAL-L (aka SMA-SKO-UNIV-L) allows to attach the sway bars of RFS 6ft through 15ft antennas onto towers, without drilling holes.
- This kit has been engineered and dimensioned to match all scenarios that occur in the field (pipes and L-sections).
- The kit is made of materials (stainless steel and hot-dip galvanized steel) with proven mechanical and environmental performance.
- Easy to install, less bulky, robust, this kit contributes to a perfect installation of RFS 6ft through 15ft antennas, from both a safety and a sustainability perspective.

**OPTION 1
Pipe**



**OPTION 2
L-section**



Technical features

MECHANICAL PROPERTIES

Weight	kg (lb)	5.6 (12.3)
---------------	---------	------------

STRUCTURE

Product Type		Sway Bar Fixation Hardware
Kit Type		Sway Bar / Tower Fixation Kit
Material		Stainless steel & Hot-dip galvanised steel

External Document Links

[Sway bar / tower fixation installation kit](#)

Notes

Tower pipe compatibility : Ø60mm up to Ø114mm.
 Tower L-section compatibility : L 60mm x 60mm up to L 110mm x 110mm.
 Compatible with RFS sway bar models in following diameters : Ø60mm.
 Approximative weight : 5.6kg.
 Only the red marked parts are delivered with the kit (see picture).