

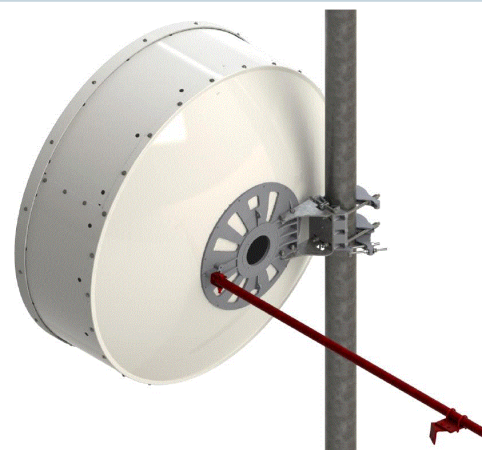


The use of the high wind kit improves the windload performance. The survival windspeed increases to 250 km/h (156 mph).

This kit is compatible with 4ft antenna revision **D**.

This kit is **not** compatible with 4ft antenna revision A, B or C.

**FEATURES / BENEFITS**



**Technical features**

**MECHANICAL PROPERTIES**

<b>Diameter</b>	m (ft)	()
<b>Weight</b>	kg (lb)	4.7 (10.4)
<b>Sway bar length</b>	m (ft)	1.35 (4.43)
<b>SWAYBARDIAMETER</b>	mm (in)	33 (1.3)

**STRUCTURE**

<b>Product Type</b>		Reinforcement Hardware
<b>Kit Type</b>		Increased Windload
<b>Material</b>		Hot-dip galvanised steel

**External Document Links**

[Installation Instruction](#)

**Notes**

The windkit includes only the red marked parts and fixing hardware.  
 Only applicable for antennas with casting mount :  
 - applicable on all SB4/SBX4 antenna models (CompactLine) revision D.  
 - applicable on all 4ft single polarized antenna models from RFS TrunkLine, PrimeLine or Harsh Areas Line and only dual polarized for frequencies above 10GHz (starting at frequency range 103).